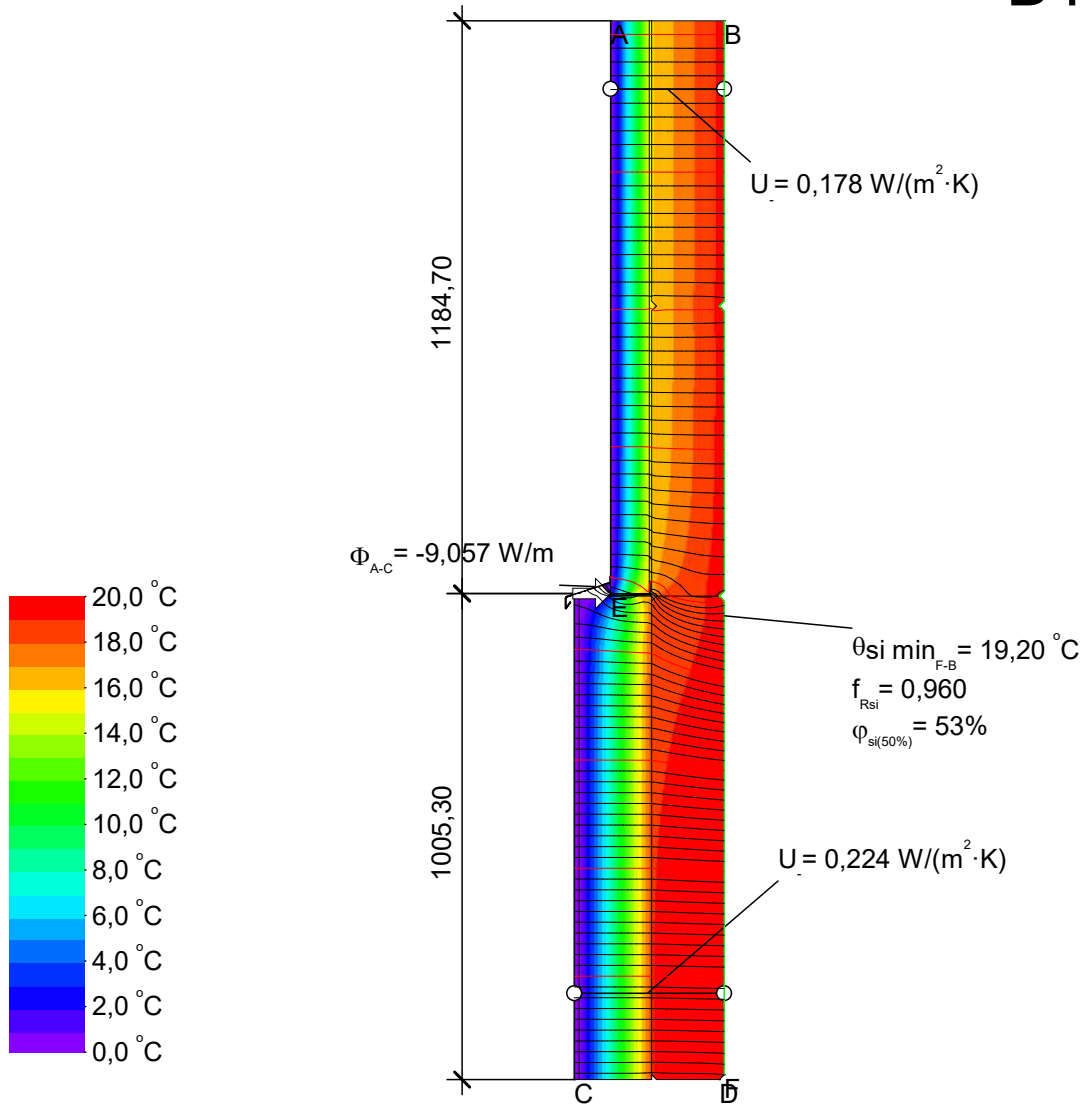


DT 1A.1.1



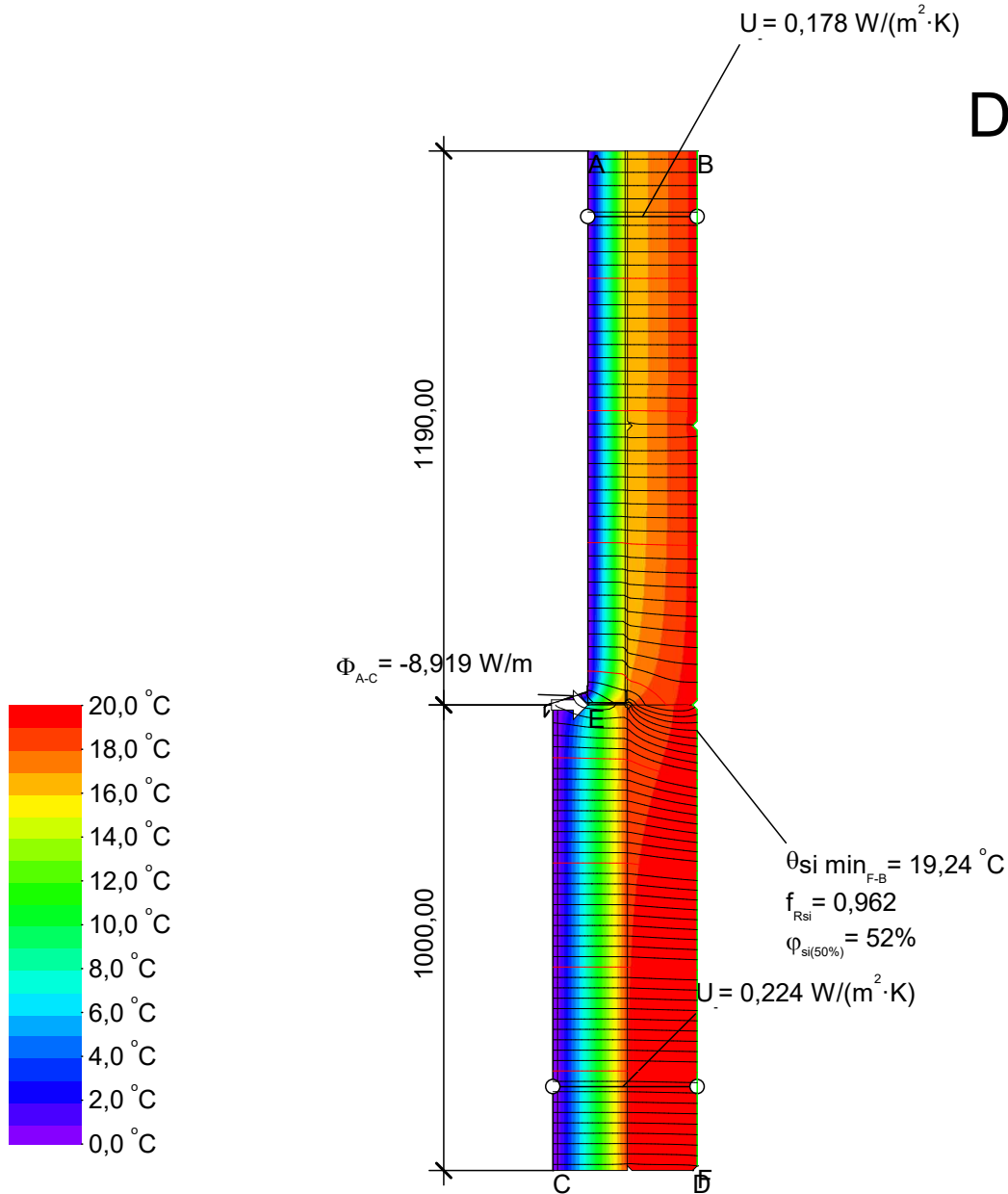
$$\psi_{A-E-C} = \frac{\Phi}{\Delta T} - U_1 \cdot b_1 - U_2 \cdot b_2 = \frac{9,057}{20,000} - 0,178 \cdot 1,185 - 0,224 \cdot 1,005 = 0,017 \text{ W}/(\text{m} \cdot \text{K})$$

Material	λ [W/(m·K)]	ϵ
Concrete, medium density 2200 kg/m ³	1,650	0,900
Foamglas® - 0,036W/mK - Type T3+	0,036	0,900
Porenbeton (525 kg/m ³)	0,150	0,900
Slightly ventilated air cavity **		
Steel	50,000	0,900
Undefined Material	0,010	0,900
Unventilated air cavity **		
quadcore	0,018	0,900
trespa	0,300	0,900

** EN ISO 10077-2:2017, 6.4.3/anisotrop

Boundary Condition	q [W/m ²]	θ [°C]	R [(m ² ·K)/W]	ϵ
Epsilon 0.9				0,900
Exterior, normal		0,000	0,040	
Interior, normal, horizontal		20,000	0,130	
Symmetry/Model section	0,000			

DT 1A.1.2



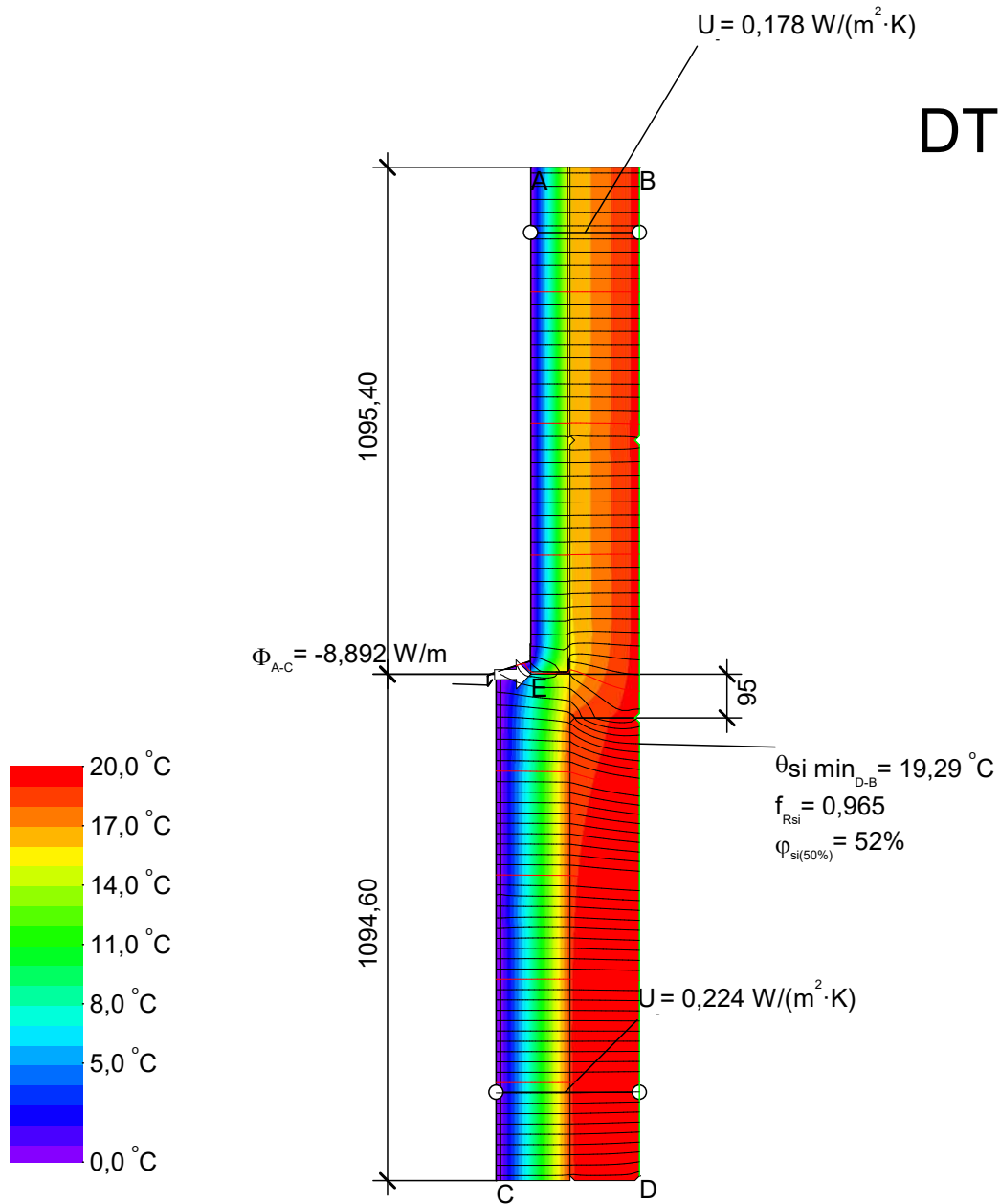
$$\psi_{A-E-C} = \frac{\Phi}{\Delta T} - U_1 \cdot b_1 - U_2 \cdot b_2 = \frac{8,919}{20,000} - 0,178 \cdot 1,190 - 0,224 \cdot 1,000 = 0,010 \text{ W}/(\text{m} \cdot \text{K})$$

Material	λ [W/(m·K)]	ϵ
Concrete, medium density 2200 kg/m ³	1,650	0,900
Foamglas® - 0,036W/mK - Type T3+	0,036	0,900
Porenbeton (525 kg/m ³)	0,150	0,900
Steel	50,000	0,900
Undefined Material	0,010	
Unventilated air cavity **		
minerale wol	0,032	0,900
quadcore	0,018	0,900
trespa	0,300	0,900

** EN ISO 10077-2:2017, 6.4.3/anisotrop

Boundary Condition	q [W/m ²]	θ [°C]	R [(m ² ·K)/W]	ϵ
Epsilon 0.9				0,900
Exterior, normal		0,000	0,040	
Interior, normal, horizontal		20,000	0,130	
Symmetry/Model section	0,000			

DT 1A.1.3



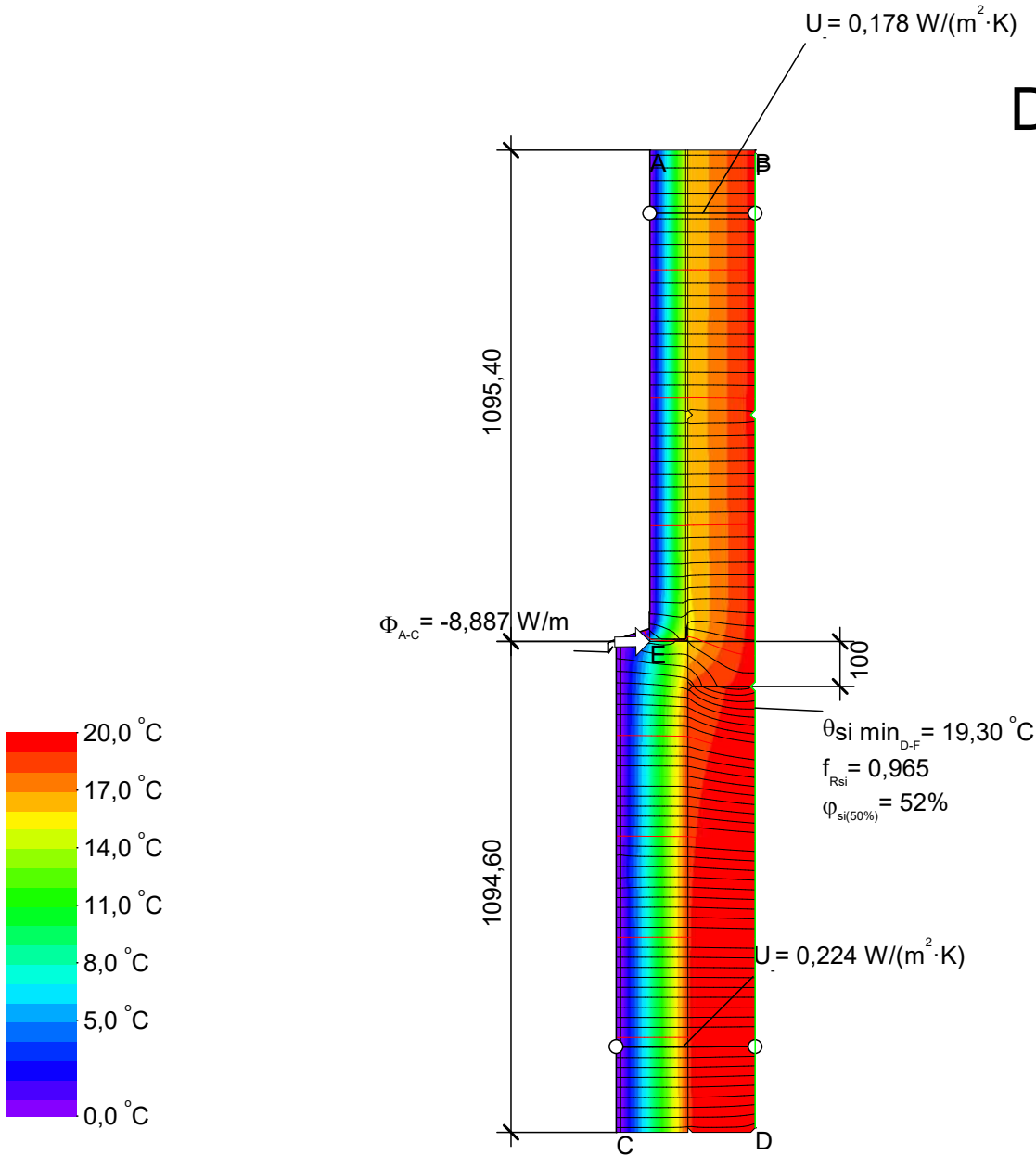
$$\psi_{A-E-C} = \frac{\Phi}{\Delta T} - U_1 \cdot b_1 - U_2 \cdot b_2 = \frac{8,892}{20,000} - 0,178 \cdot 1,095 - 0,224 \cdot 1,095 = 0,004 \text{ W}/(\text{m} \cdot \text{K})$$

Material	λ [W/(m·K)]	ϵ
Concrete, medium density 2200 kg/m3	1,650	0,900
Foamglas® - 0,036W/mK - Type T3+	0,036	0,900
Porenbeton (525 kg/m³)	0,150	0,900
Steel	50,000	0,900
Undefined Material	0,010	
Unventilated air cavity **		
minerale wol	0,032	0,900
quadcore	0,018	0,900
trespa	0,300	0,900

** EN ISO 10077-2:2017, 6.4.3/anisotrop

Boundary Condition	q [W/m²]	θ [°C]	R [(m²·K)/W]	ϵ
Epsilon 0.9				0,900
Exterior, normal	0,000		0,040	
Interior, normal, horizontal	20,000		0,130	
Symmetry/Model section	0,000			

DT 1A.1.4



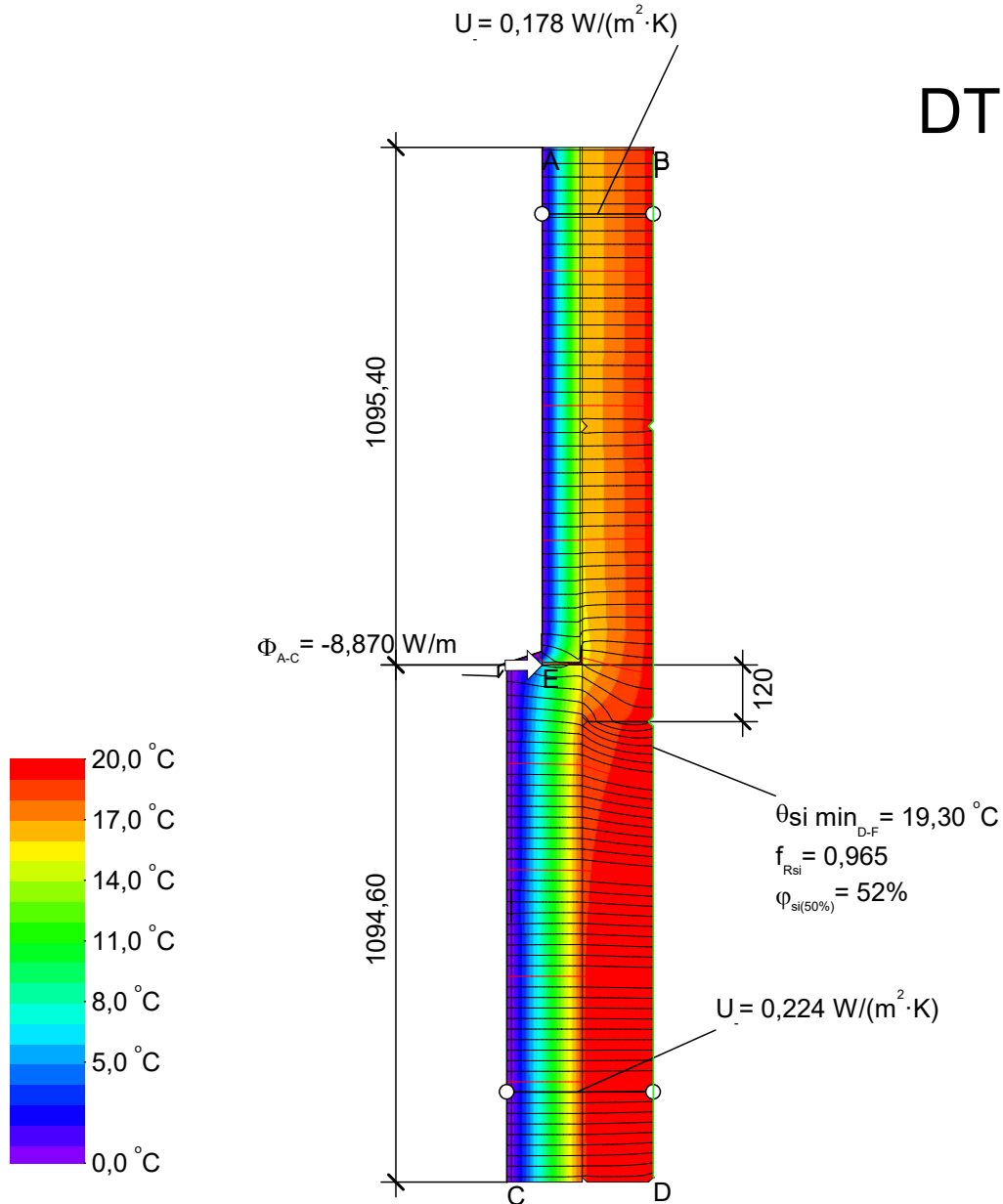
$$\Psi_{A-E-C} = \frac{\Phi}{\Delta T} - U_1 \cdot b_1 - U_2 \cdot b_2 = \frac{8,887}{20,000} - 0,178 \cdot 1,095 - 0,224 \cdot 1,095 = 0,004 \text{ W}/(\text{m} \cdot \text{K})$$

Material	λ [W/(m·K)]	ϵ
Concrete, medium density 2200 kg/m ³	1,650	0,900
Foamglas® - 0,036W/mK - Type T3+	0,036	0,900
Porenbeton (525 kg/m ³)	0,150	0,900
Steel	50,000	0,900
Undefined Material	0,010	
Unventilated air cavity **		
minerale wol	0,032	0,900
quadcore	0,018	0,900
trespa	0,300	0,900

** EN ISO 10077-2:2017, 6.4.3/anisotrop

Boundary Condition	q [W/m ²]	θ [°C]	R [(m ² ·K)/W]	ϵ
Epsilon 0.9				0,900
Exterior, normal		0,000	0,040	
Interior, normal, horizontal		20,000	0,130	
Symmetry/Model section	0,000			

DT 1A.1.5



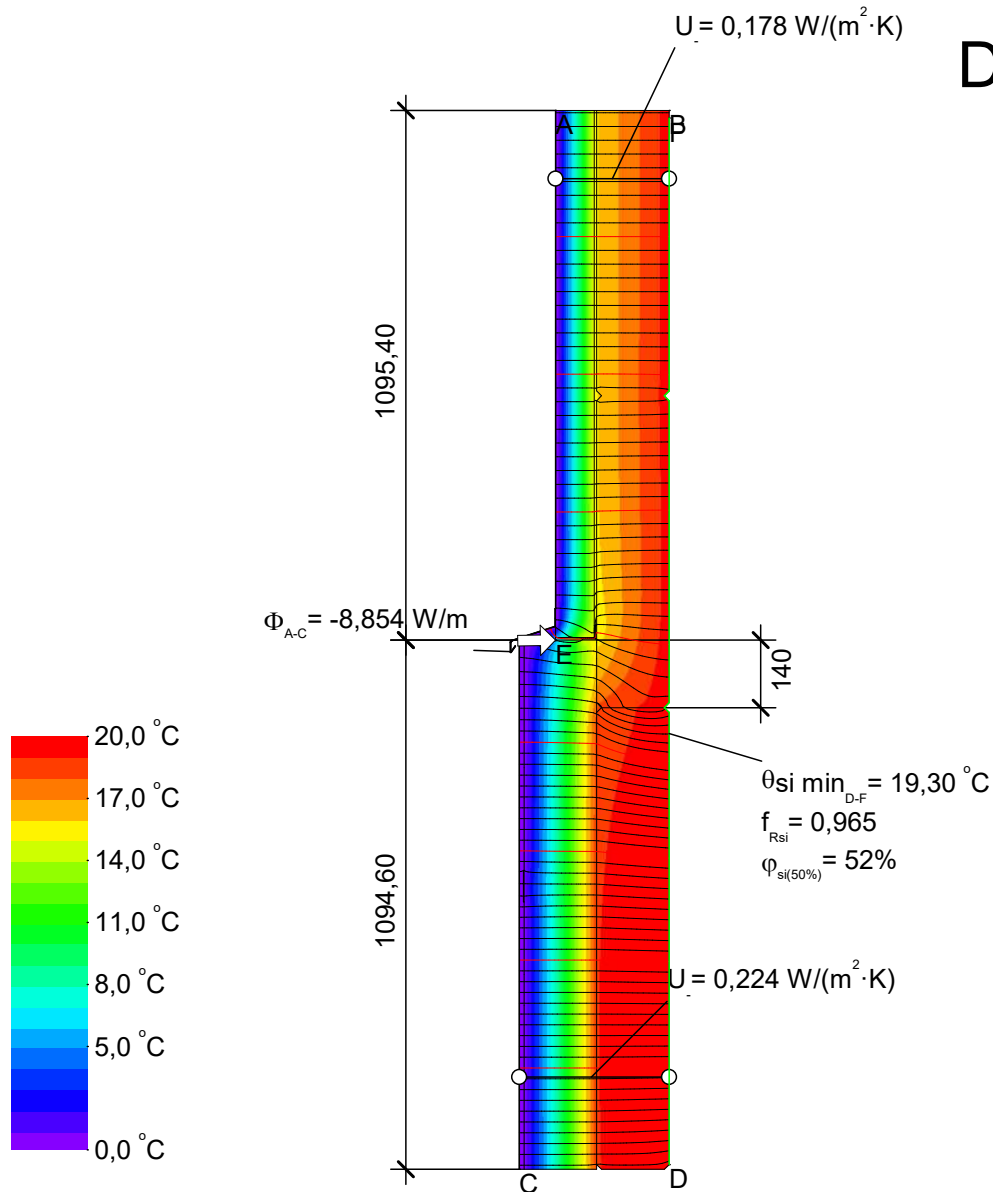
$$\psi_{A-E-C} = \frac{\Phi}{\Delta T} - U_1 \cdot b_1 - U_2 \cdot b_2 = \frac{8,870}{20,000} - 0,178 \cdot 1,095 - 0,224 \cdot 1,095 = 0,003 \text{ W}/(\text{m} \cdot \text{K})$$

Material	λ [W/(m·K)]	ϵ
Concrete, medium density 2200 kg/m3	1,650	0,900
Foamglas® - 0,036W/mK - Type T3+	0,036	0,900
Porenbeton (525 kg/m³)	0,150	0,900
Steel	50,000	0,900
Undefined Material	0,010	
Unventilated air cavity **		
minerale wol	0,032	0,900
quadcore	0,018	0,900
trespa	0,300	0,900

** EN ISO 10077-2:2017, 6.4.3/anisotrop

Boundary Condition	q [W/m²]	θ^o [°C]	R [(m²·K)/W]	ϵ
Epsilon 0.9				0,900
Exterior, normal	0,000		0,040	
Interior, normal, horizontal	20,000		0,130	
Symmetry/Model section	0,000			

DT 1A.1.6



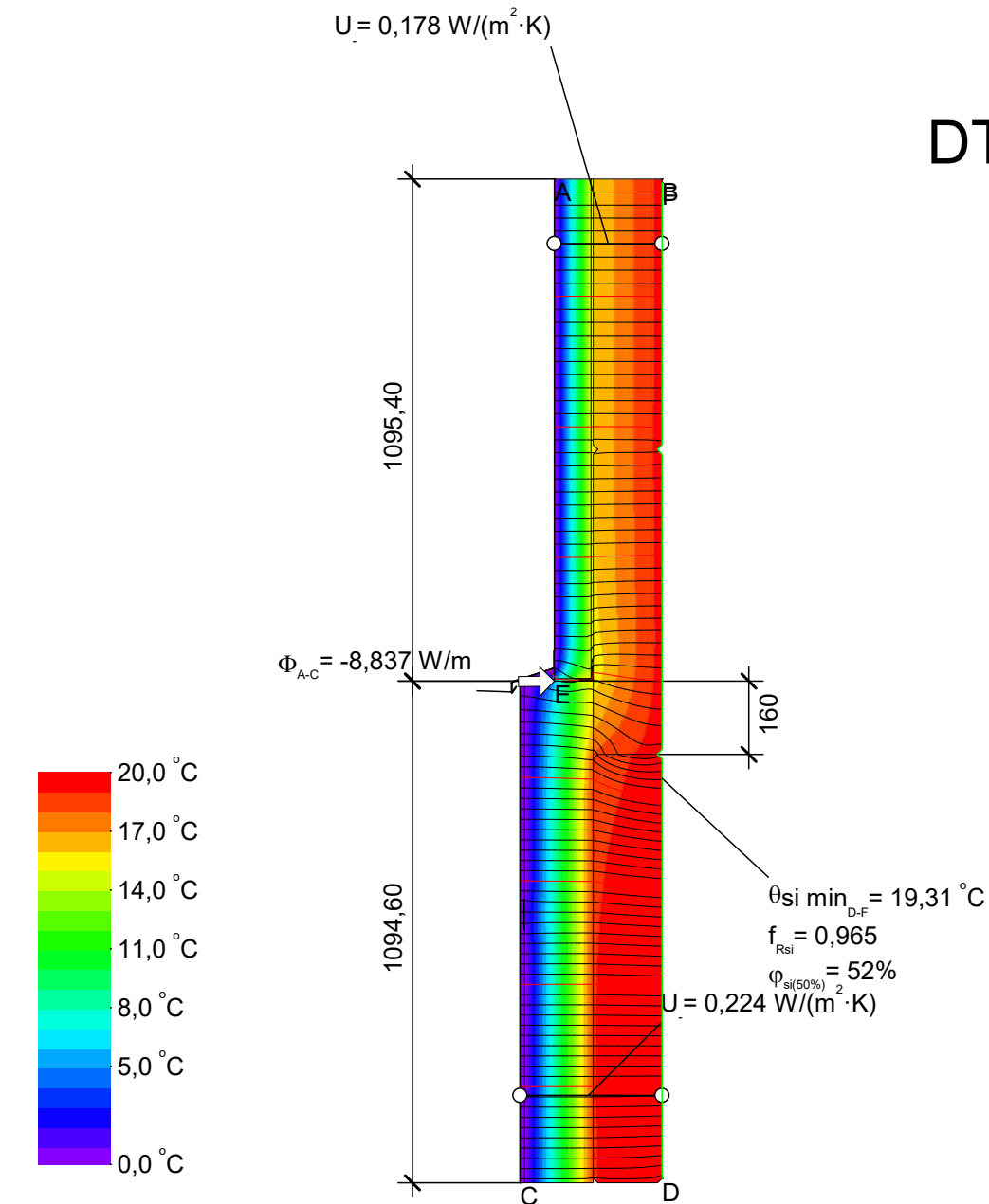
$$\psi_{A-E-C} = \frac{\Phi}{\Delta T} - U_1 \cdot b_1 - U_2 \cdot b_2 = \frac{8,854}{20,000} - 0,178 \cdot 1,095 - 0,224 \cdot 1,095 = 0,002 \text{ W}/(\text{m} \cdot \text{K})$$

Material	λ [W/(m·K)]	ϵ
Concrete, medium density 2200 kg/m3	1,650	0,900
Foamglas® - 0,036W/mK - Type T3+	0,036	0,900
Porenbeton (525 kg/m³)	0,150	0,900
Steel	50,000	0,900
Undefined Material	0,010	
Unventilated air cavity **		
minerale wol	0,032	0,900
quadcore	0,018	0,900
trespa	0,300	0,900

** EN ISO 10077-2:2017, 6.4.3/anisotrop

Boundary Condition	q [W/m²]	θ [°C]	R [(m²·K)/W]	ϵ
Epsilon 0.9				0,900
Exterior, normal		0,000	0,040	
Interior, normal, horizontal		20,000	0,130	
Symmetry/Model section	0,000			

DT 1A.1.7



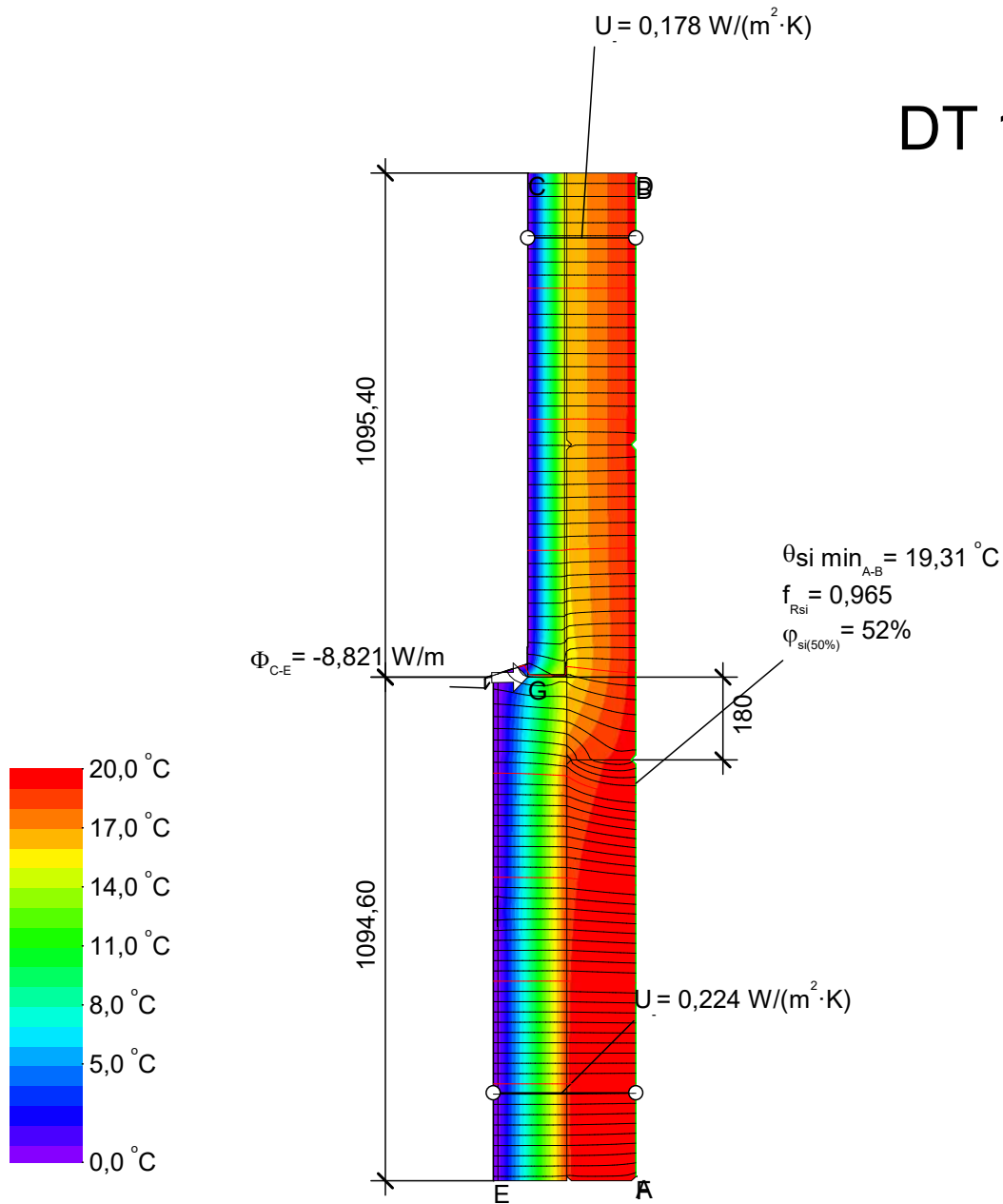
$$\psi_{A-E-C} = \frac{\Phi}{\Delta T} - U_1 \cdot b_1 - U_2 \cdot b_2 = \frac{8,837}{20,000} - 0,178 \cdot 1,095 - 0,224 \cdot 1,095 = 0,001 \text{ W/(m} \cdot \text{K)}$$

Material	λ [W/(m·K)]	ϵ
Concrete, medium density 2200 kg/m3	1,650	0,900
Foamglas® - 0,036W/mK - Type T3+	0,036	0,900
Porenbeton (525 kg/m³)	0,150	0,900
Steel	50,000	0,900
Undefined Material	0,010	
Unventilated air cavity **		
minerale wol	0,032	0,900
quadcore	0,018	0,900
trespa	0,300	0,900

** EN ISO 10077-2:2017, 6.4.3/anisotrop

Boundary Condition	q [W/m²]	θ [°C]	R [(m²·K)/W]	ϵ
Epsilon 0.9				0,900
Exterior, normal	0,000		0,040	
Interior, normal, horizontal	20,000		0,130	
Symmetry/Model section	0,000			

DT 1A.1.8



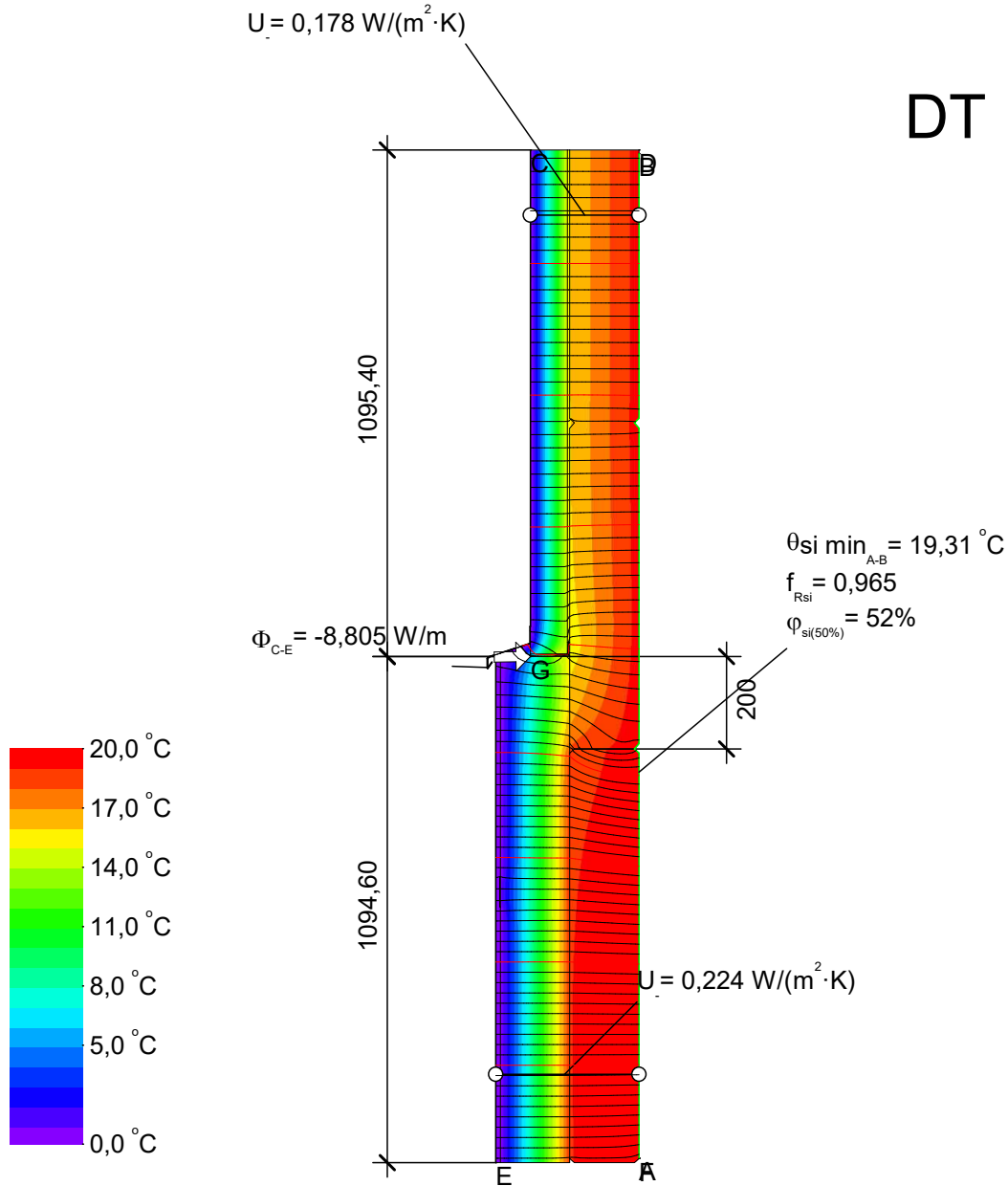
$$\psi_{C-G-E} = \frac{\Phi}{\Delta T} - U_1 \cdot b_1 - U_2 \cdot b_2 = \frac{8,821}{20,000} - 0,178 \cdot 1,095 - 0,224 \cdot 1,095 = 0,001 \text{ W}/(\text{m} \cdot \text{K})$$

Material	λ [W/(m·K)]	ε
Concrete, medium density 2200 kg/m ³	1,650	0,900
Foamglas® - 0,036W/mK - Type T3+	0,036	0,900
Porenbeton (525 kg/m ³)	0,150	0,900
Steel	50,000	0,900
Undefined Material	0,010	
Unventilated air cavity **		
minerale wol	0,032	0,900
quadcore	0,018	0,900
trespala	0,300	0,900

** EN ISO 10077-2:2017, 6.4.3/anisotrop

Boundary Condition	q [W/m ²]	θ [°C]	R [(m ² ·K)/W]	ε
Epsilon 0.9				0,900
Exterior, normal		0,000	0,040	
Interior, normal, horizontal		20,000	0,130	
Symmetry/Model section	0,000			

DT 1A.1.9

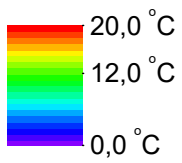
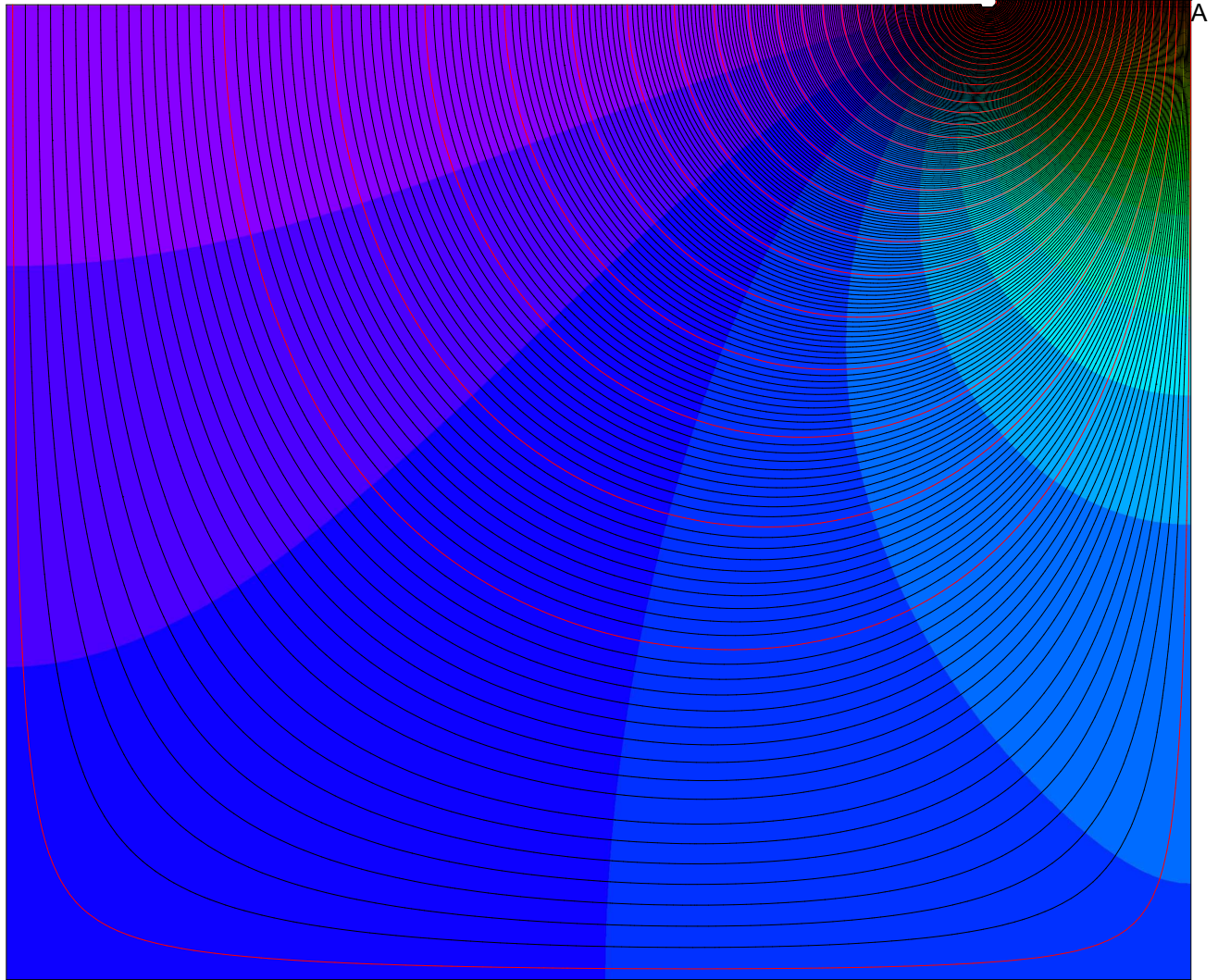


$$\psi_{C-G-E} = \frac{\Phi}{\Delta T} - U_1 \cdot b_1 - U_2 \cdot b_2 = \frac{8,805}{20,000} - 0,178 \cdot 1,095 - 0,224 \cdot 1,095 = 0,000 \text{ W}/(\text{m} \cdot \text{K})$$

Material	λ [W/(m·K)]	ϵ
Concrete, medium density 2200 kg/m3	1,650	0,900
Foamglas® - 0,036W/mK - Type T3+	0,036	0,900
Porenbeton (525 kg/m³)	0,150	0,900
Steel	50,000	0,900
Undefined Material	0,010	
Unventilated air cavity **		
minerale wol	0,032	0,900
quadcore	0,018	0,900
trespa	0,300	0,900

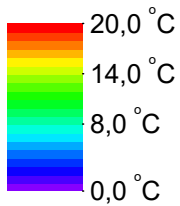
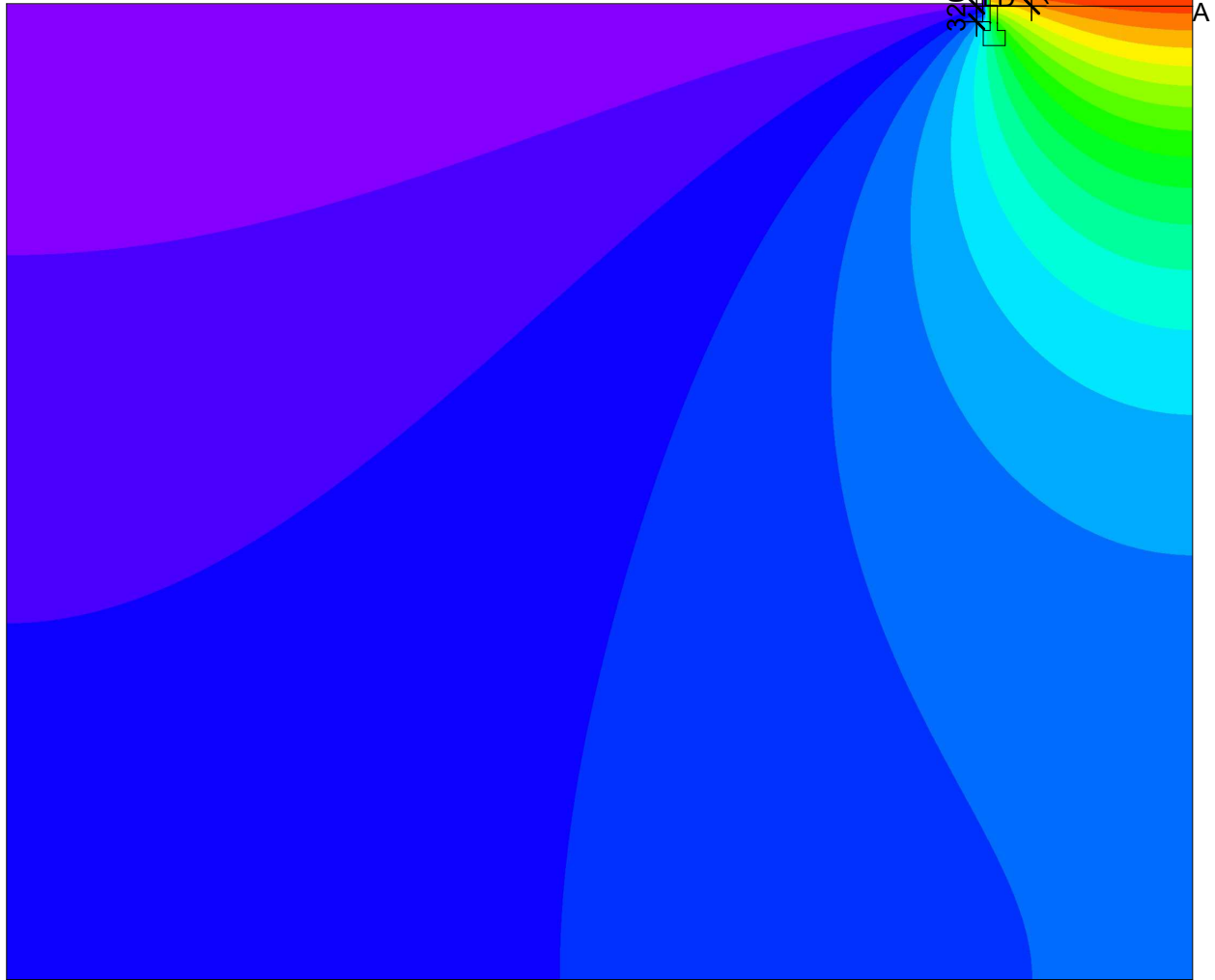
** EN ISO 10077-2:2017, 6.4.3/anisotrop

$$\Phi_{A-B} = 42,793 \text{ W/m}$$



DT 1A.1_foamglas

$\theta_{si\ min}_{A-B} = 17,22\ ^\circ C$
 $f_{Rsi} = 0,861$
 $\phi_{si(50\%)} = 60\%$
 $U_{F-G} = 0,224\ W/(m^2 \cdot K)$
 $U_{D-E} = 0,224\ W/(m^2 \cdot K)$
 $\Phi_{A-C} = 42,147\ W/m$

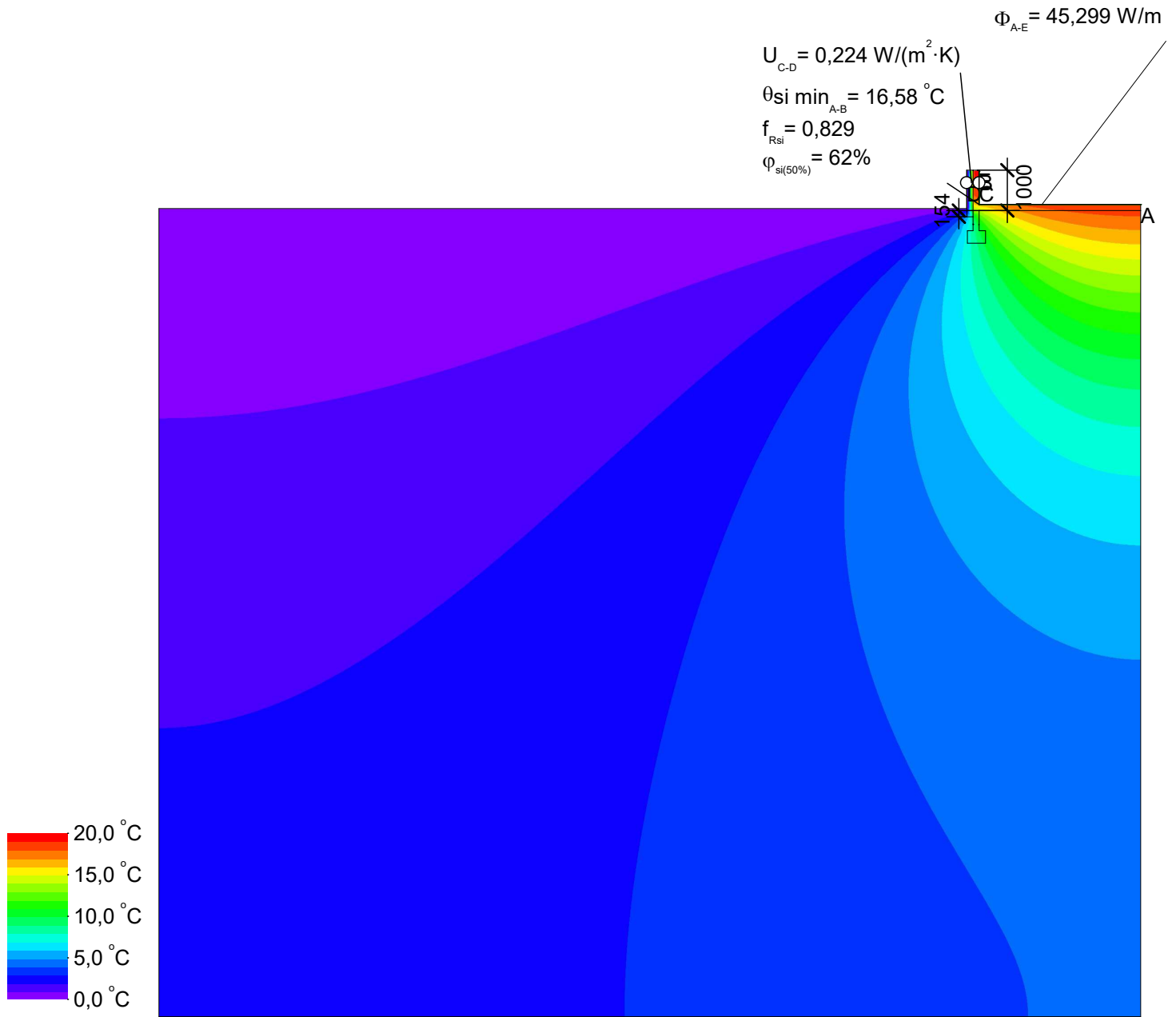


DT 1A.1.10

Material	$\lambda[W/(m \cdot K)]$	ϵ
Concrete, medium density 2200 kg/m3	1,650	0,900
Foamglas® - 0,036W/mK - Type T3+	0,036	
Sand and gravel	2,000	0,900
Unventilated air cavity **		
trespa	0,300	0,900

** EN ISO 10077-2:2017, 6.4.3/anisotrop

Boundary Condition	$q[W/m^2]$	$\theta[^\circ C]$	$R[(m^2 \cdot K)/W]$	ϵ
Epsilon 0.9				0,900
Exterior, normal		0,000	0,040	
Interior, heat flux, downwards	20,000		0,170	
Interior, normal, horizontal		20,000	0,130	
Symmetry/Model section	0,000			



DT 1A.1.11

Material	$\lambda[\text{W}/(\text{m} \cdot \text{K})]$	ε
Concrete, medium density 2200 kg/m ³	1,650	0,900
Foamglas® - 0,036W/mK - Type T3+	0,036	
Sand and gravel	2,000	0,900
Unventilated air cavity **		
trespa	0,300	0,900

** EN ISO 10077-2:2017, 6.4.3/anisotrop

Boundary Condition	$q[\text{W}/\text{m}^2]$	$\theta[^\circ\text{C}]$	$R[(\text{m}^2 \cdot \text{K})/\text{W}]$	ε
Epsilon 0.9				0,900
Exterior, normal			0,040	
Interior, heat flux, downwards	20,000		0,170	
Interior, normal, horizontal	20,000		0,130	
Symmetry/Model section	0,000			

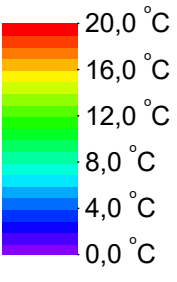
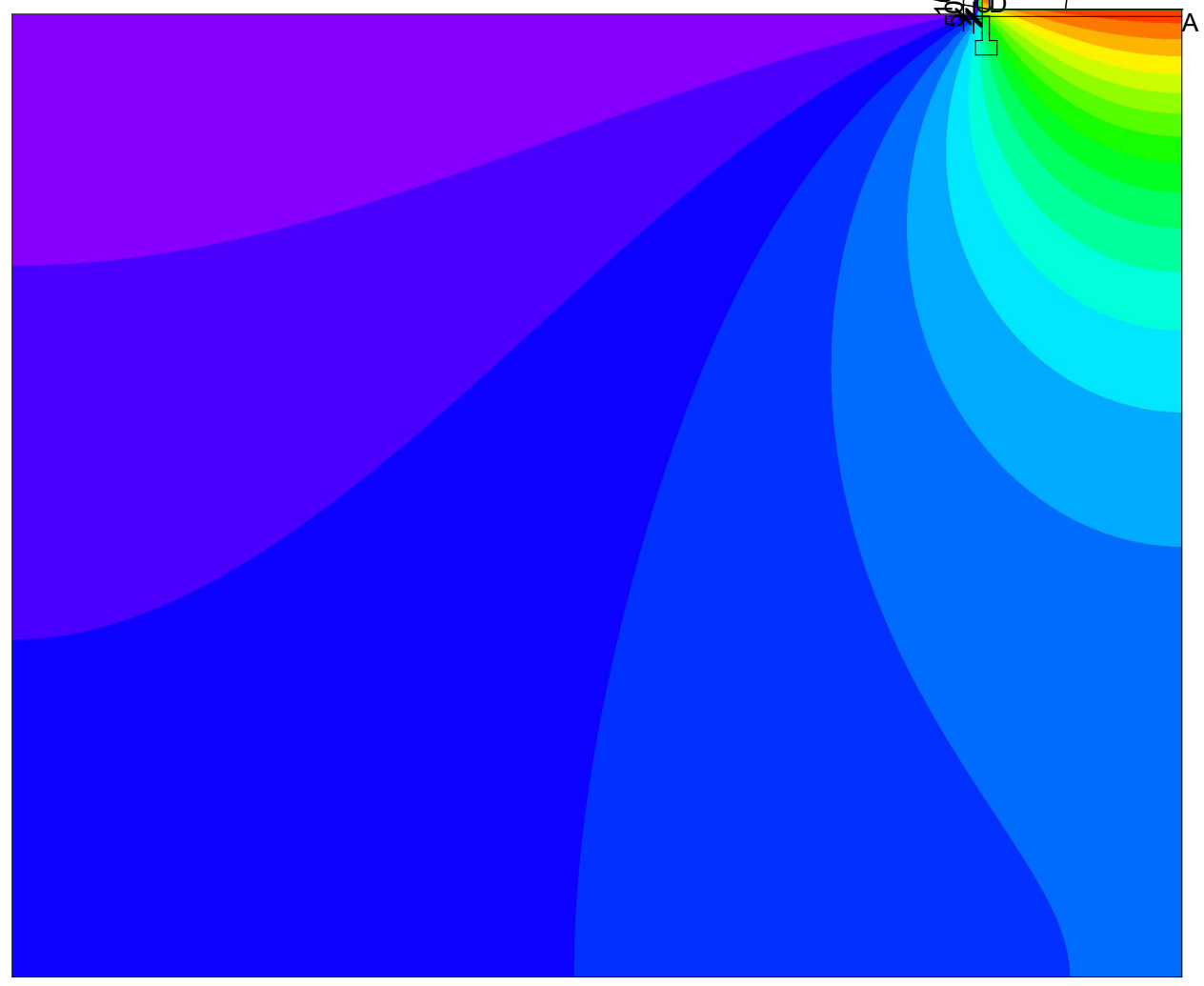
$\Phi_{A-B} = 47,692 \text{ W/m}$

$\theta_{si \text{ min}} = 16,00 \text{ }^\circ\text{C}$

$U_{C-D} = 0,224 \text{ W/(m}^2 \cdot \text{K)}$

$f_{Rsi} = 0,800$

$\varphi_{si(50\%)} = 64\%$



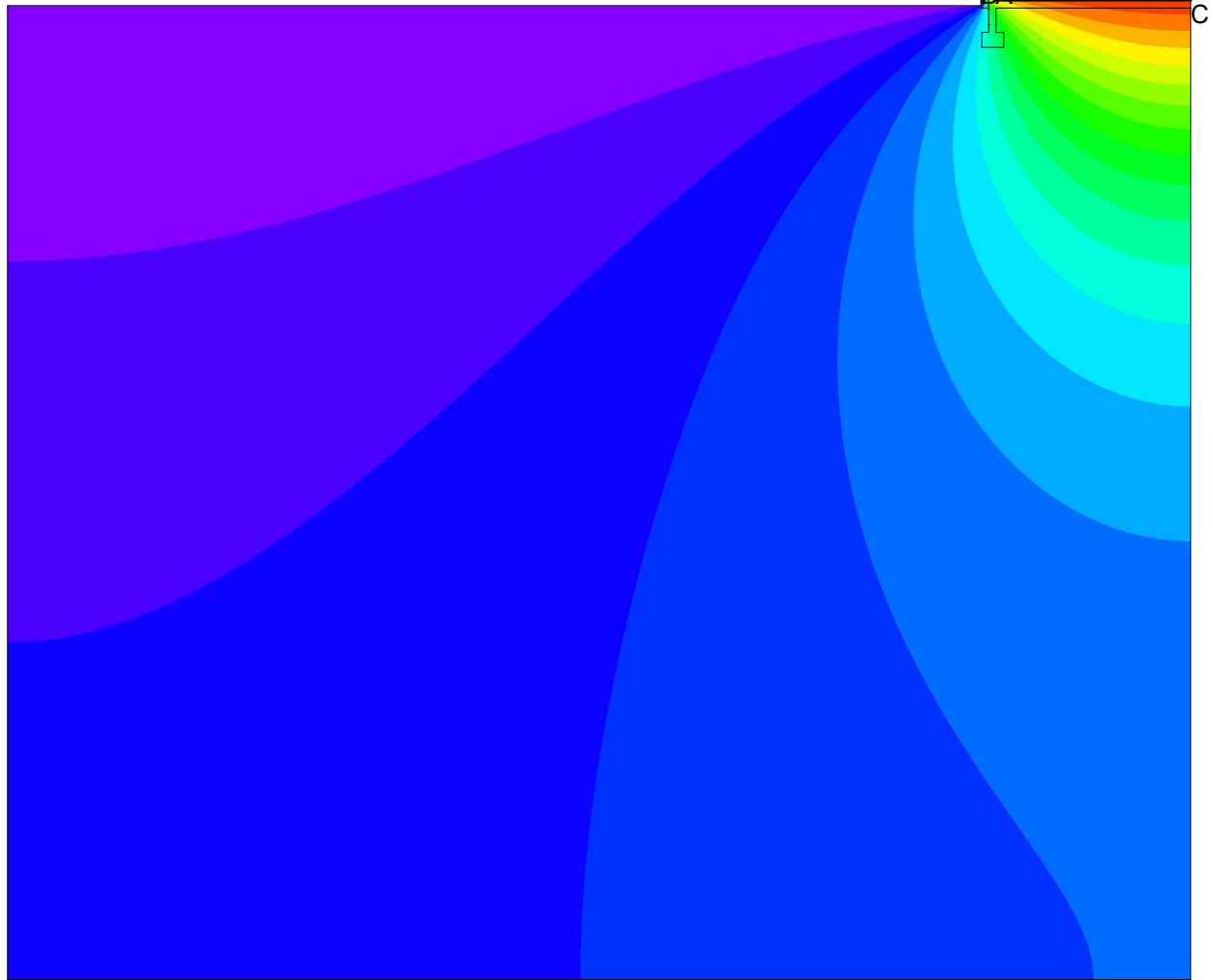
DT 1A.1.12

Material	$\lambda[\text{W}/(\text{m}\cdot\text{K})]$	ϵ
Concrete, medium density 2200 kg/m ³	1,650	0,900
Foamglas® - 0,036W/mK - Type T3+	0,036	
Sand and gravel	2,000	0,900
Unventilated air cavity **		
trespa	0,300	0,900

** EN ISO 10077-2:2017, 6.4.3/anisotrop

Boundary Condition	$q[\text{W}/\text{m}^2]$	$\theta[^\circ\text{C}]$	$R[(\text{m}^2 \cdot \text{K})/\text{W}]$	ϵ
Epsilon 0.9				0,900
Exterior, normal	0,000		0,040	
Interior, heat flux, downwards	20,000		0,170	
Interior, normal, horizontal	20,000		0,130	
Symmetry/Model section	0,000			

$\theta_{si \min_{C-D}} = 15,62 \text{ }^\circ\text{C}$
 $f_{Rsi} = 0,781$
 $\phi_{si(50\%)} = 66\%$
 $\Phi_{C-D} = 49,100 \text{ W/m}$
 $U_{A-B} = 0,224 \text{ W/(m}^2 \cdot \text{K)}$



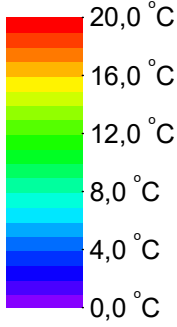
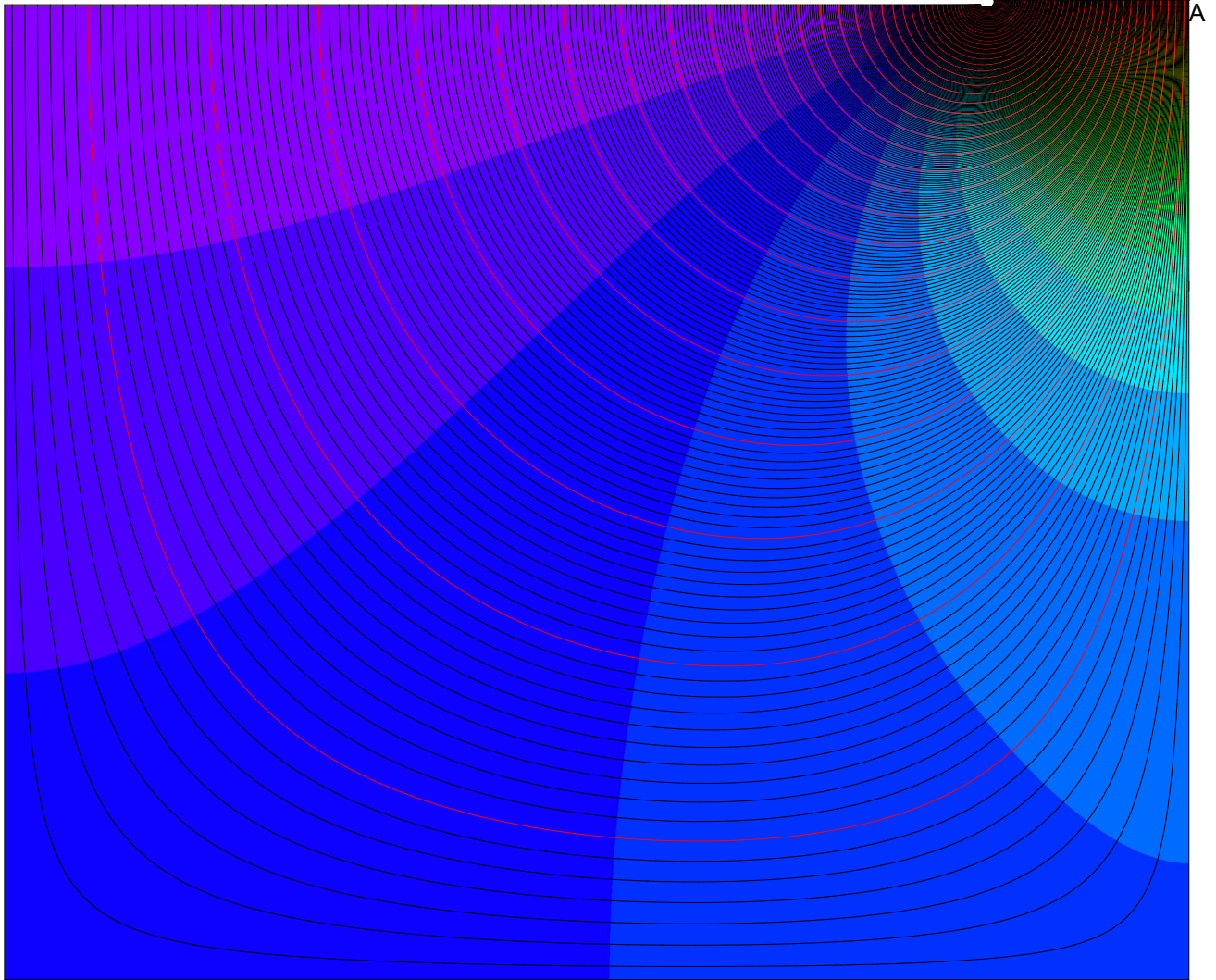
DT 1A.1.13

Material	λ [W/(m·K)]	ϵ
Concrete, medium density 2200 kg/m ³	1,650	0,900
Foamglas® - 0,036W/mK - Type T3+	0,036	
Sand and gravel	2,000	0,900
Unventilated air cavity **		
trespa	0,300	0,900

** EN ISO 10077-2:2017, 6.4.3/anisotrop

Boundary Condition	q [W/m ²]	θ [°C]	R [(m ² ·K)/W]	ϵ
Epsilon 0.9				0,900
Exterior, normal		0,000	0,040	
Interior, heat flux, downwards	20,000		0,170	
Interior, normal, horizontal		20,000	0,130	
Symmetry/Model section	0,000			

$\Phi_{A-B} = 43,248 \text{ W/m}$



Material	λ [W/(m·K)]
Concrete, medium density 2200 kg/m ³	1,650
Sand and gravel	2,000

Boundary Condition	q [W/m ²]	θ [°C]	R [(m ² ·K)/W]
Exterior, normal	0,000	0,040	
Interior, heat flux, downwards	20,000	0,170	
Symmetry/Model section	0,000		

DT 1A.1_XPS

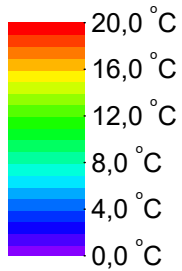
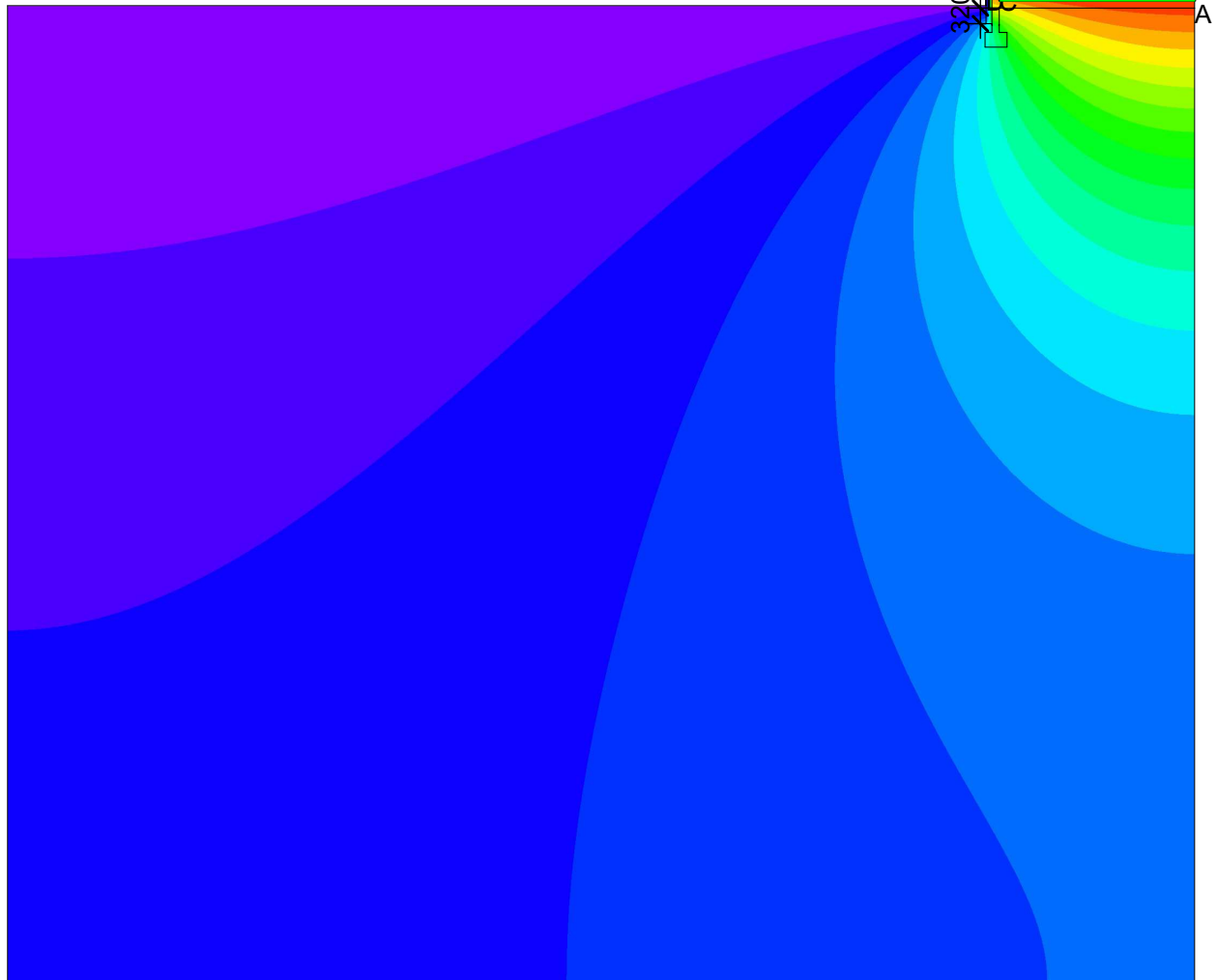
$$\theta_{si \min}_{A-E} = 17,16 \text{ } ^\circ\text{C}$$

$$f_{Rsi} = 0,858$$

$$\varphi_{si(50\%)} = 60\%$$

$$U_{C-D} = 0,234 \text{ W/(m}^2 \cdot \text{K)}$$

$$\Phi_{A-B} = 42,614 \text{ W/m}$$



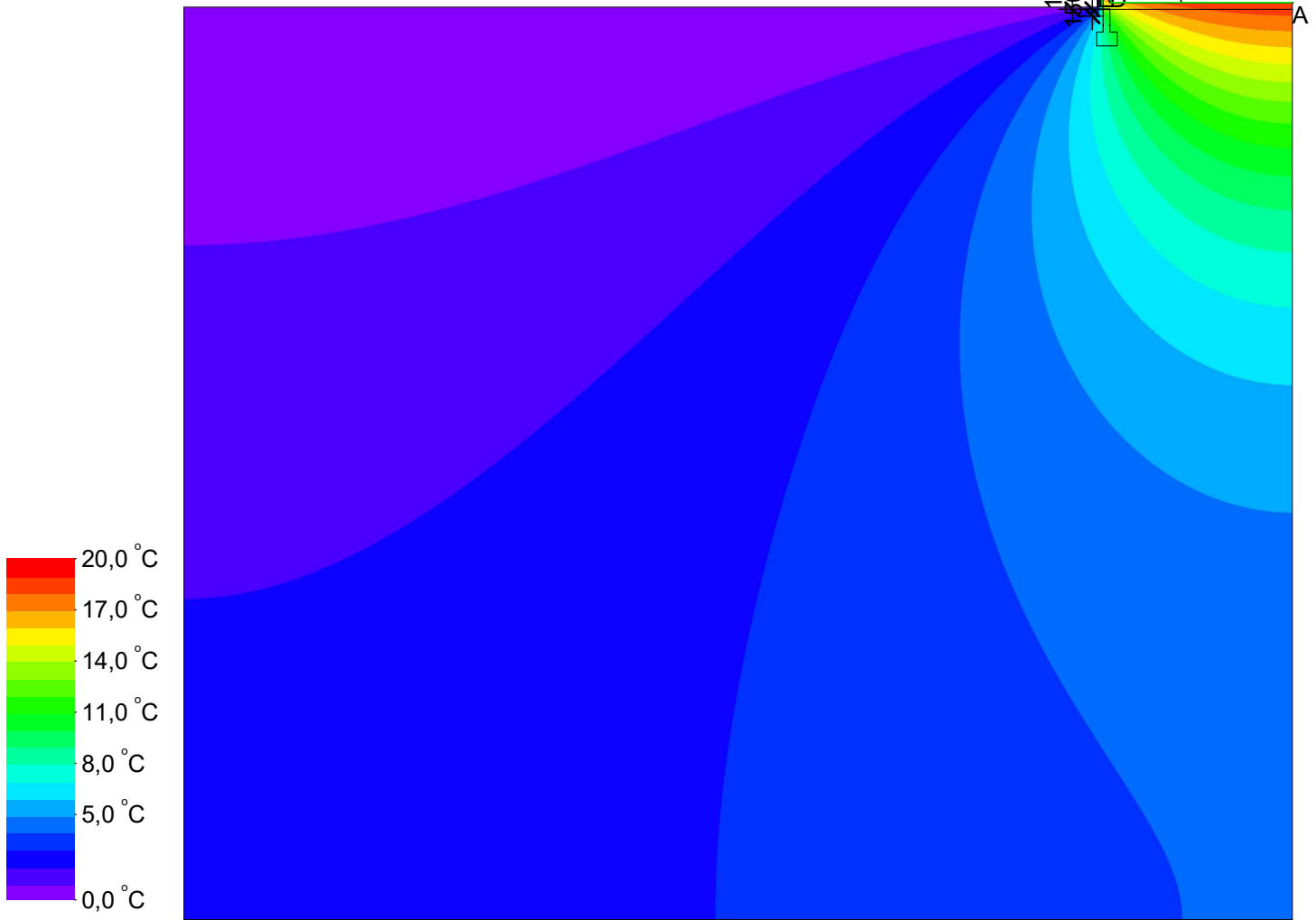
Material	λ [W/(m·K)]	ε
Concrete, medium density 2200 kg/m ³	1,650	0,900
Sand and gravel	2,000	0,900
Unventilated air cavity **		
XPS	0,030	0,900
trespa	0,300	0,900

** EN ISO 10077-2:2017, 6.4.3/anisotrop

DT 1A.1.14

Boundary Condition	q [W/m ²]	θ [°C]	R [(m ² ·K)/W]	ε
Epsilon 0.9				0,900
Exterior, normal		0,000	0,040	
Interior, heat flux, downwards	20,000		0,170	
Interior, normal, horizontal		20,000	0,130	
Symmetry/Model section	0,000			

$\theta_{si \min}_{A-C} = 16,43 \text{ }^\circ\text{C}$
 $f_{Rsi} = 0,822$
 $\varphi_{si(50\%)} = 63\%$
 $\Phi_{A-B} = 45,871 \text{ W/m}$
 $U_{D-E} = 0,234 \text{ W}/(\text{m}^2 \cdot \text{K})$



DT 1A.1.15

Boundary Condition	$q[\text{W}/\text{m}^2]$	$\theta[^\circ\text{C}]$	$R[(\text{m}^2 \cdot \text{K})/\text{W}]$	ε
Epsilon 0.9				0,900
Exterior, normal	0,000		0,040	
Interior, heat flux, downwards	20,000		0,170	
Interior, normal, horizontal	20,000		0,130	
Symmetry/Model section	0,000			

Material	$\lambda[\text{W}/(\text{m} \cdot \text{K})]$	ε
Concrete, medium density 2200 kg/m ³	1,650	0,900
Sand and gravel	2,000	0,900
Unventilated air cavity **		
XPS	0,030	0,900
trespa	0,300	0,900

** EN ISO 10077-2:2017, 6.4.3/anisotrop

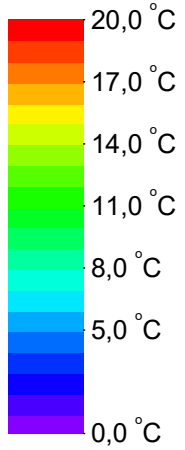
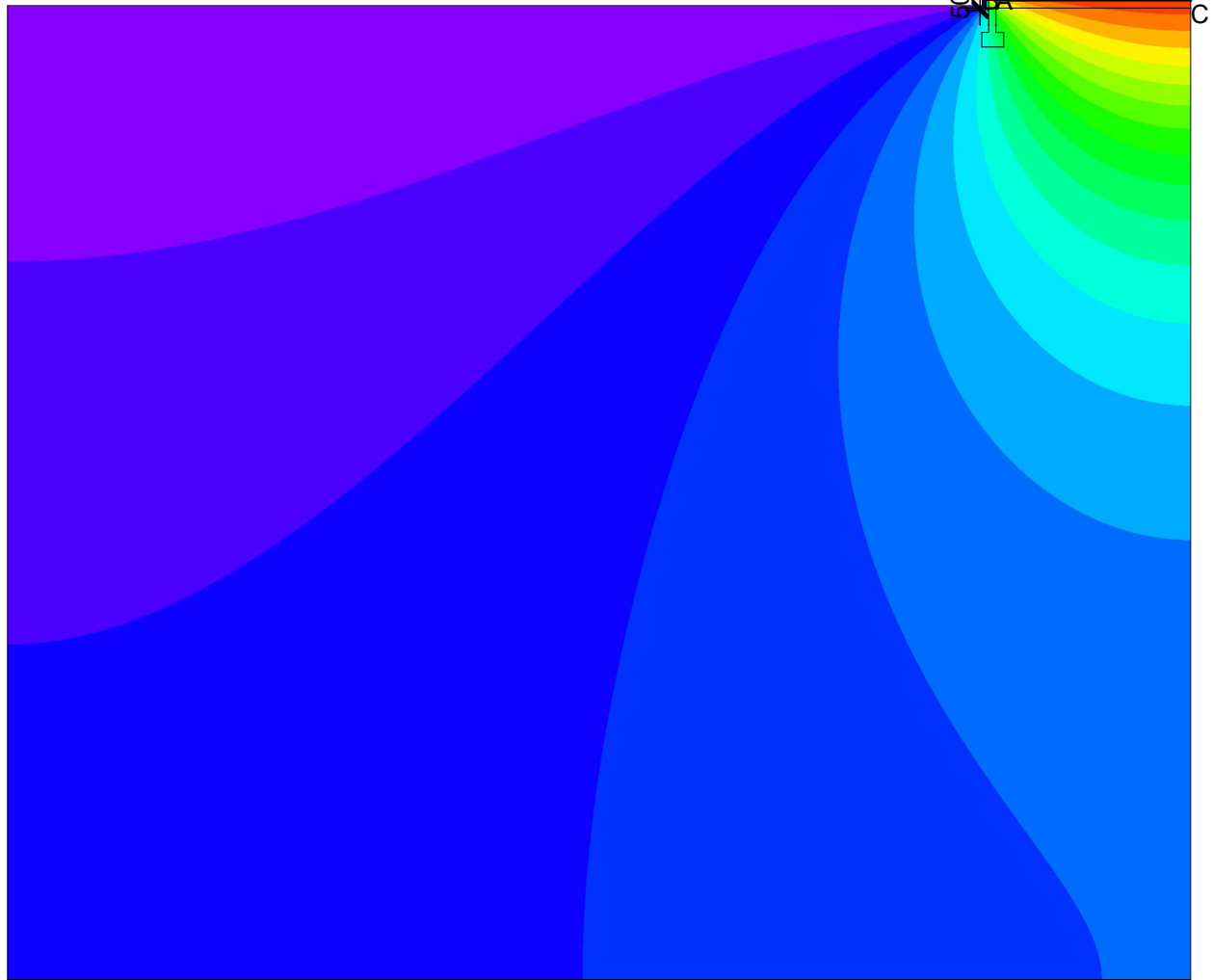
$\theta_{si\ min\ C-D} = 15,81\ ^\circ C$

$f_{Rsi} = 0,790$

$\phi_{si(50\%)} = 65\%$

$U_{A-B} = 0,234\ W/(m^2 \cdot K)$

$\Phi_{C-E} = 48,385\ W/m$



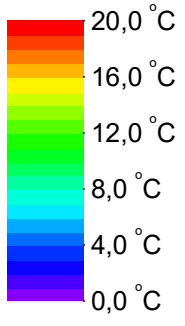
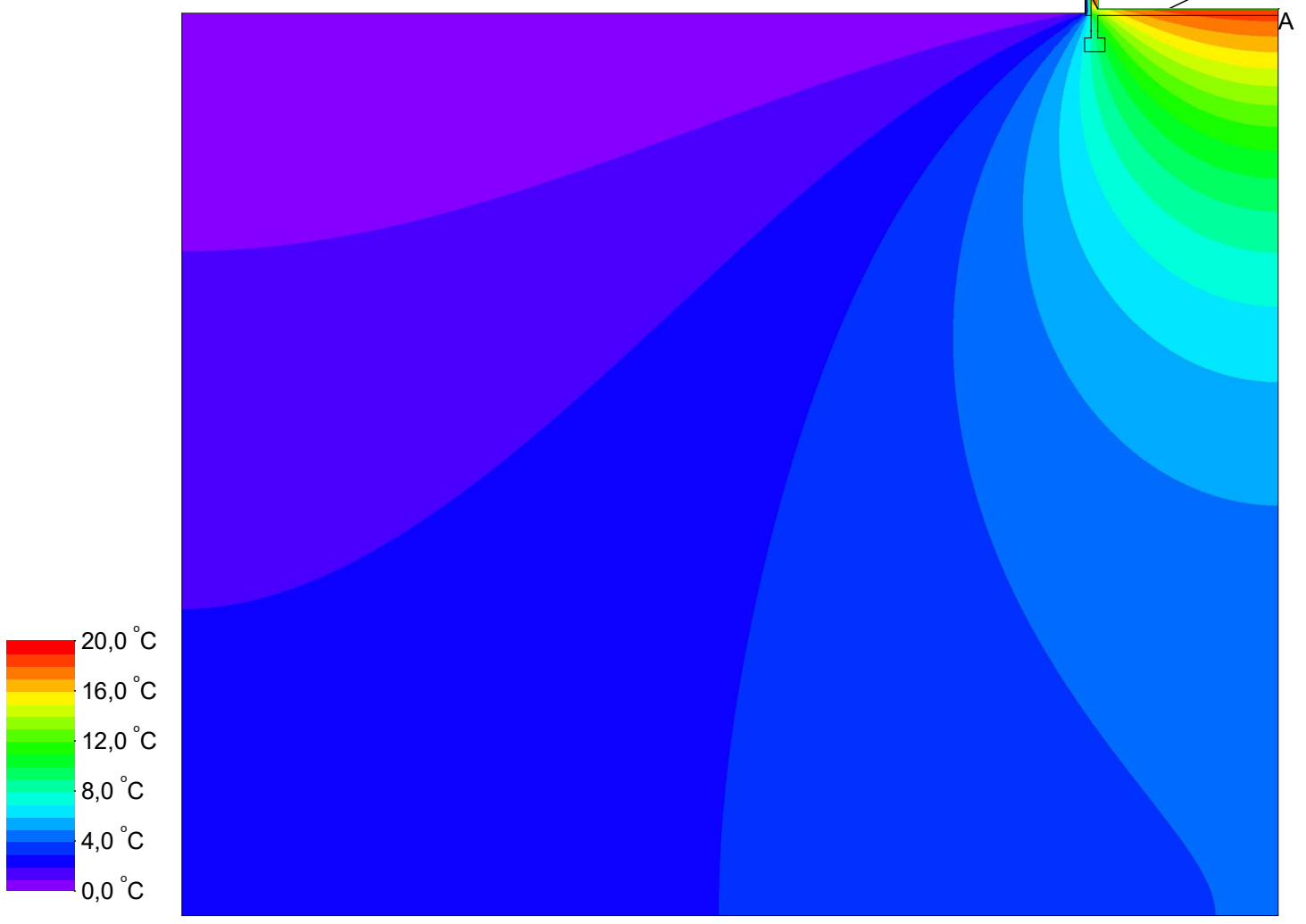
Material	$\lambda[W/(m \cdot K)]$	ϵ
Concrete, medium density 2200 kg/m ³	1,650	0,900
Sand and gravel	2,000	0,900
Unventilated air cavity **		
XPS	0,030	0,900
trespa	0,300	0,900

** EN ISO 10077-2:2017, 6.4.3/anisotrop

DT 1A.1.16

Boundary Condition	$q[W/m^2]$	$\theta[^\circ C]$	$R[(m^2 \cdot K)/W]$	ϵ
Epsilon 0.9				0,900
Exterior, normal		0,000	0,040	
Interior, heat flux, downwards	20,000		0,170	
Interior, normal, horizontal	20,000		0,130	
Symmetry/Model section	0,000			

$\theta_{si\ min\ A-B} = 15,43\ ^\circ C$
 $f_{Rsi} = 0,771$
 $\phi_{si(50\%)} = 67\%$
 $U_{C-D} = 0,234\ W/(m^2 \cdot K)$
 $\Phi_{A-B} = 49,840\ W/m$



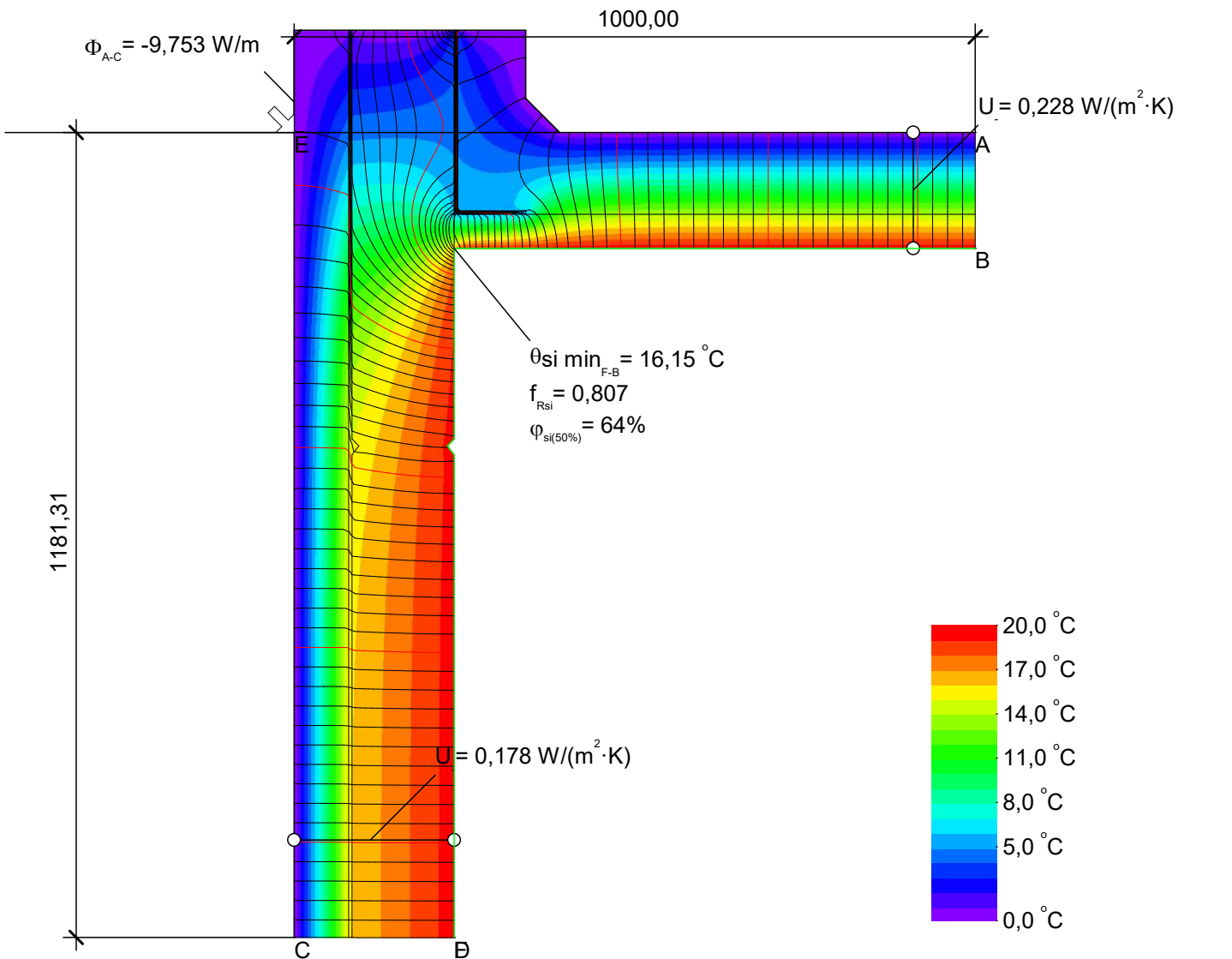
Material	$\lambda[W/(m \cdot K)]$	ϵ
Concrete, medium density 2200 kg/m ³	1,650	0,900
Sand and gravel	2,000	0,900
Unventilated air cavity **		
XPS	0,030	0,900
trespa	0,300	0,900

** EN ISO 10077-2:2017, 6.4.3/anisotrop

DT 1A.1.17

Boundary Condition	$q[W/m^2]$	$\theta[^\circ C]$	$R[(m^2 \cdot K)/W]$	ϵ
Epsilon 0.9				0,900
Exterior, normal	0,000		0,040	
Interior, heat flux, downwards	20,000		0,170	
Interior, normal, horizontal	20,000		0,130	
Symmetry/Model section	0,000			

DT 1A.2.1



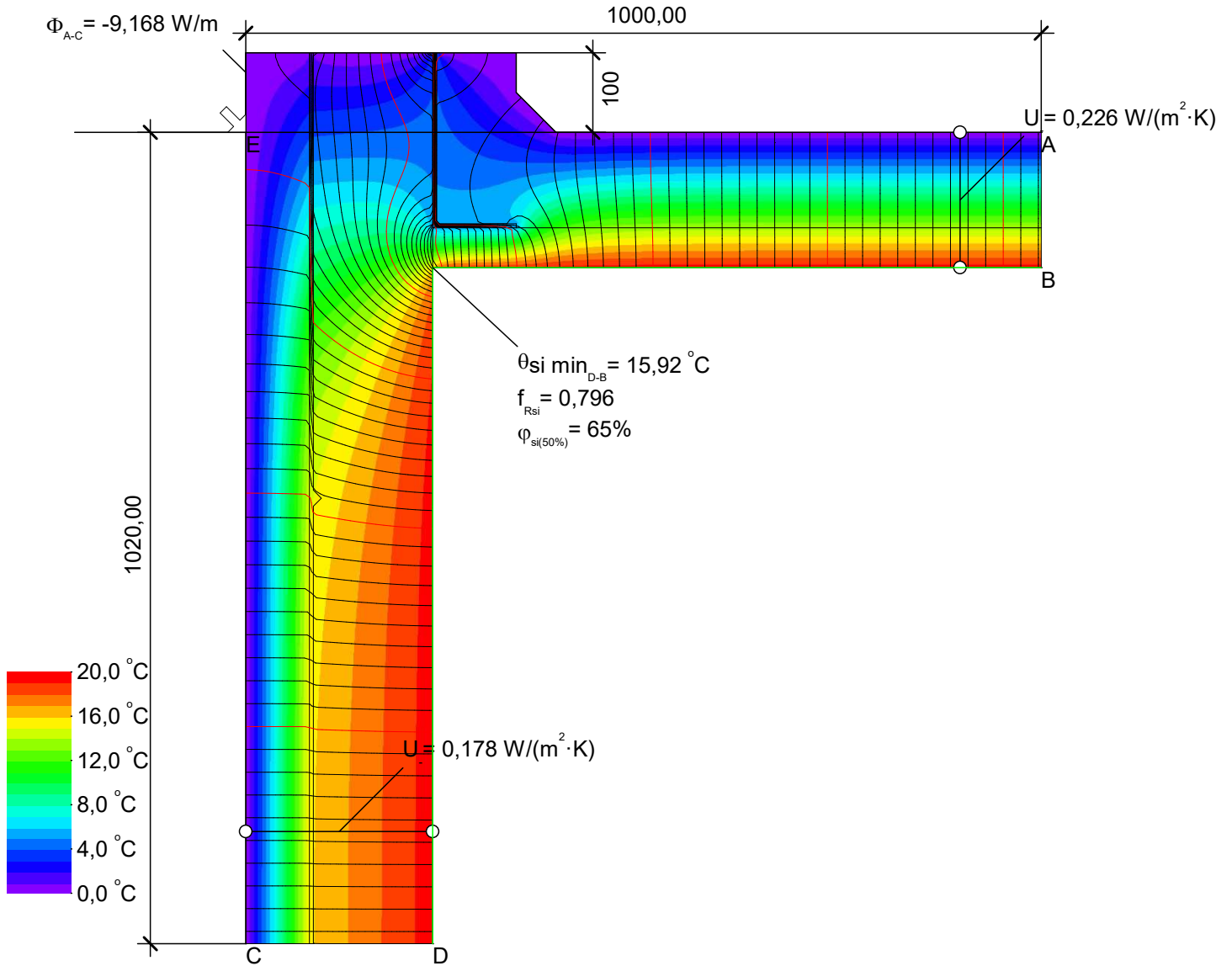
$$\psi_{A-E-C} = \frac{\Phi}{\Delta T} - U_1 \cdot b_1 - U_2 \cdot b_2 = \frac{9,753}{20,000} - 0,228 \cdot 1,000 - 0,178 \cdot 1,181 = 0,050 \text{ W}/(\text{m} \cdot \text{K})$$

Material	λ [W/(m·K)]	ϵ
Porenbeton Rohdichte 500 kg/m3	0,150	0,900
Quadcore	0,018	0,900
Steel	50,000	
Unventilated air cavity **		
minerale wol	0,040	
rotswol	0,040	

** EN ISO 10077-2:2017, 6.4.3/anisotrop

Boundary Condition	q [W/m²]	θ [°C]	R [(m²·K)/W]	ϵ
Epsilon 0.9				0,900
Exterior, normal		0,000	0,040	
Interior, heat flux, upwards	20,000		0,100	
Interior, normal, horizontal	20,000		0,130	
Symmetry/Model section	0,000			

DT 1A.2.2

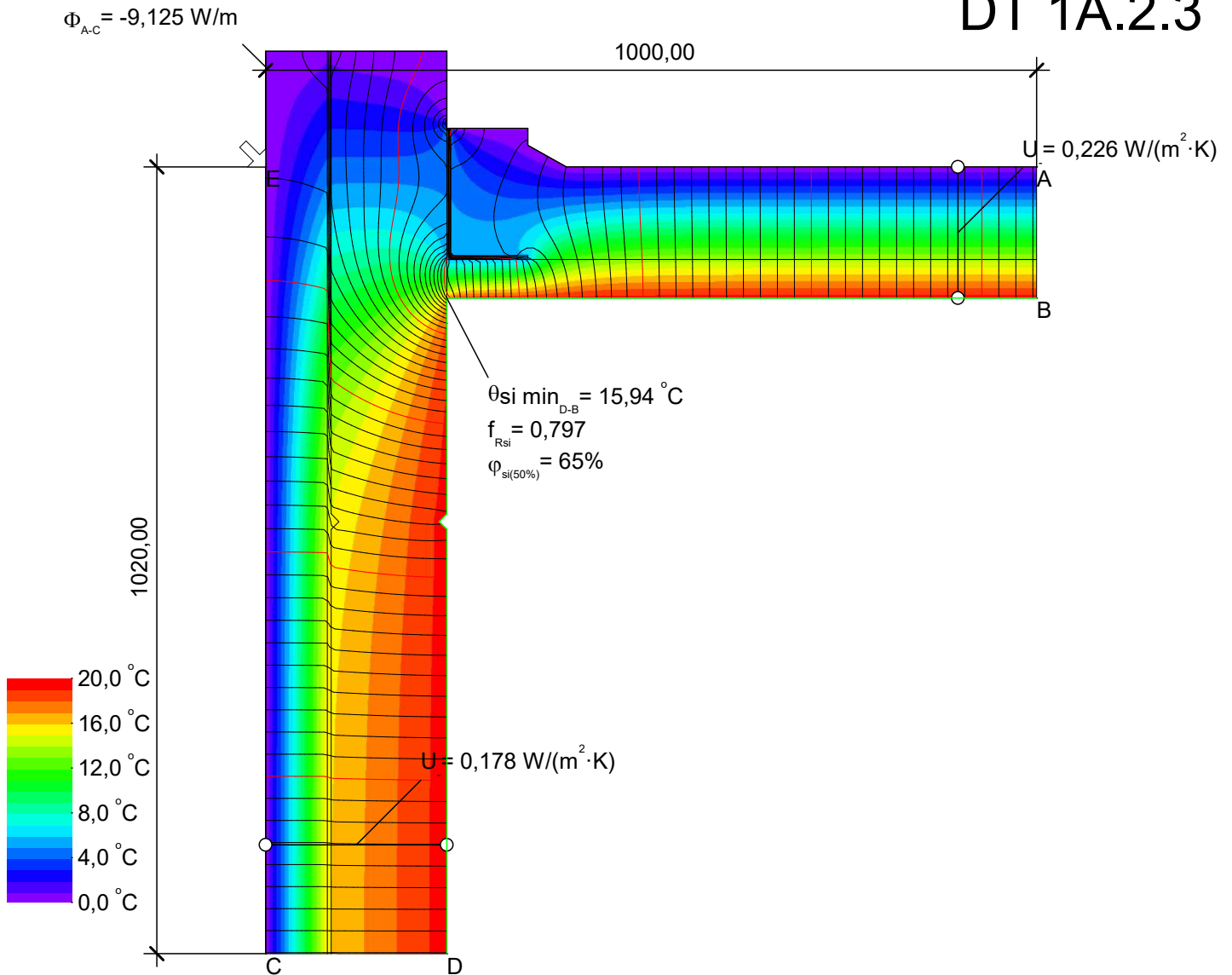


$$\psi_{A-E-C} = \frac{\Phi}{\Delta T} - U_1 \cdot b_1 - U_2 \cdot b_2 = \frac{9,168}{20,000} - 0,226 \cdot 1,000 - 0,178 \cdot 1,020 = 0,051 \text{ W/(m}\cdot\text{K)}$$

Material	λ [W/(m·K)]	ϵ
Porenbeton Rohdichte 500 kg/m ³	0,150	0,900
Quadcore	0,018	0,900
Steel	50,000	
Unventilated air cavity **		
minerale wol	0,040	
rotswol	0,040	
** EN ISO 10077-2:2017, 6.4.3/anisotrop		

Boundary Condition	q [W/m ²]	θ [°C]	R [(m ² ·K)/W]	ϵ
Epsilon 0.9				0,900
Exterior, normal		0,000	0,040	
Interior, normal, horizontal		20,000	0,130	
Symmetry/Model section	0,000			

DT 1A.2.3



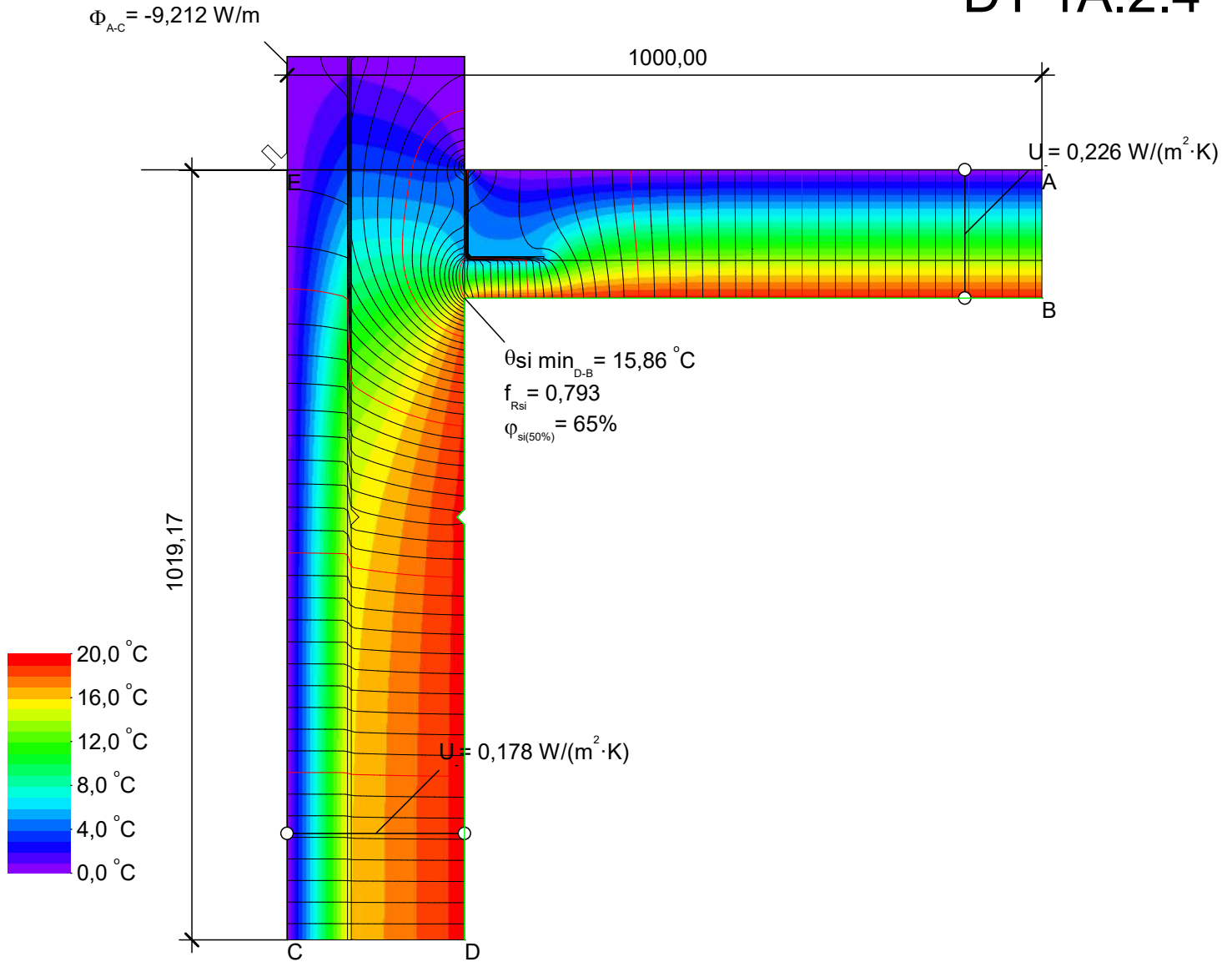
$$\Psi_{A-E-C} = \frac{\Phi}{\Delta T} - U_1 \cdot b_1 - U_2 \cdot b_2 = \frac{9,125}{20,000} - 0,226 \cdot 1,000 - 0,178 \cdot 1,020 = 0,048 \text{ W/(m} \cdot \text{K)}$$

Material	λ [W/(m·K)]	ϵ
Porenbeton Rohdichte 500 kg/m3	0,150	0,900
Quadcore	0,018	0,900
Steel	50,000	
Unventilated air cavity **		
minerale wol	0,040	
rotswol	0,040	

** EN ISO 10077-2:2017, 6.4.3/anisotrop

Boundary Condition	q [W/m ²]	θ [°C]	R [(m ² ·K)/W]	ϵ
Epsilon 0.9				0,900
Exterior, normal	0,000		0,040	
Interior, normal, horizontal	20,000		0,130	
Symmetry/Model section	0,000			

DT 1A.2.4



$$\Psi_{A-E-C} = \frac{\Phi}{\Delta T} - U_1 \cdot b_1 - U_2 \cdot b_2 = \frac{9,212}{20,000} - 0,226 \cdot 1,000 - 0,178 \cdot 1,019 = 0,053 \text{ W/(m}\cdot\text{K)}$$

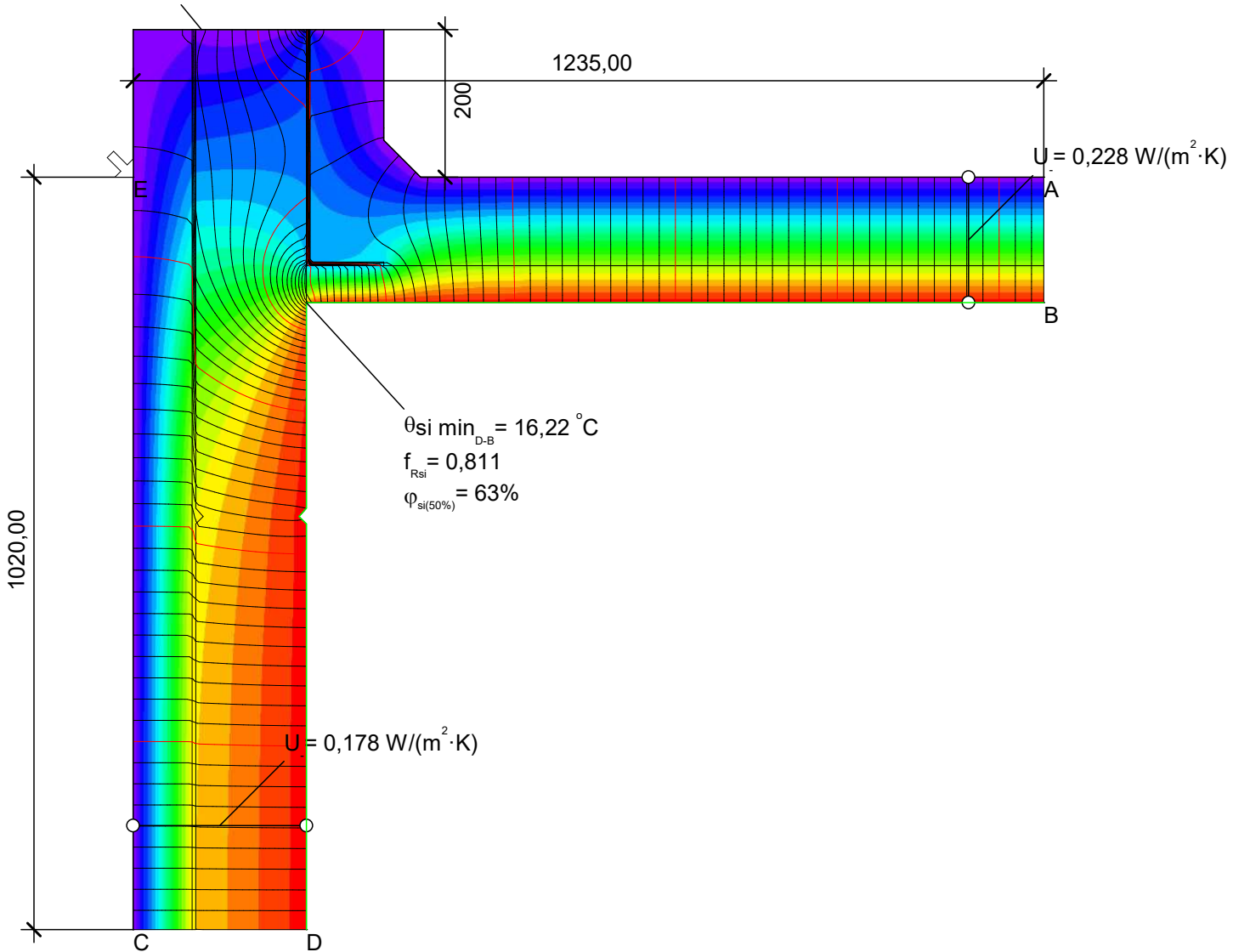
Material	λ [W/(m·K)]	ϵ
Porenbeton Rohdichte 500 kg/m ³	0,150	0,900
Quadcore	0,018	0,900
Steel	50,000	
Unventilated air cavity **		
minerale wol	0,040	
rotswol	0,040	

** EN ISO 10077-2:2017, 6.4.3/anisotrop

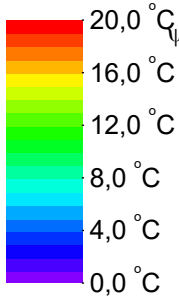
Boundary Condition	q [W/m ²]	θ [°C]	R [(m ² ·K)/W]	ϵ
Epsilon 0.9				0,900
Exterior, normal		0,000	0,040	
Interior, normal, horizontal		20,000	0,130	
Symmetry/Model section	0,000			

DT 1A.2.5

$$\Phi_{A-C} = -10,166 \text{ W/m}$$



$$\psi_{A-E-C} = \frac{\Phi}{\Delta T} - U_1 \cdot b_1 - U_2 \cdot b_2 = \frac{10,166}{20,000} - 0,228 \cdot 1,235 - 0,178 \cdot 1,020 = 0,045 \text{ W}/(\text{m} \cdot \text{K})$$



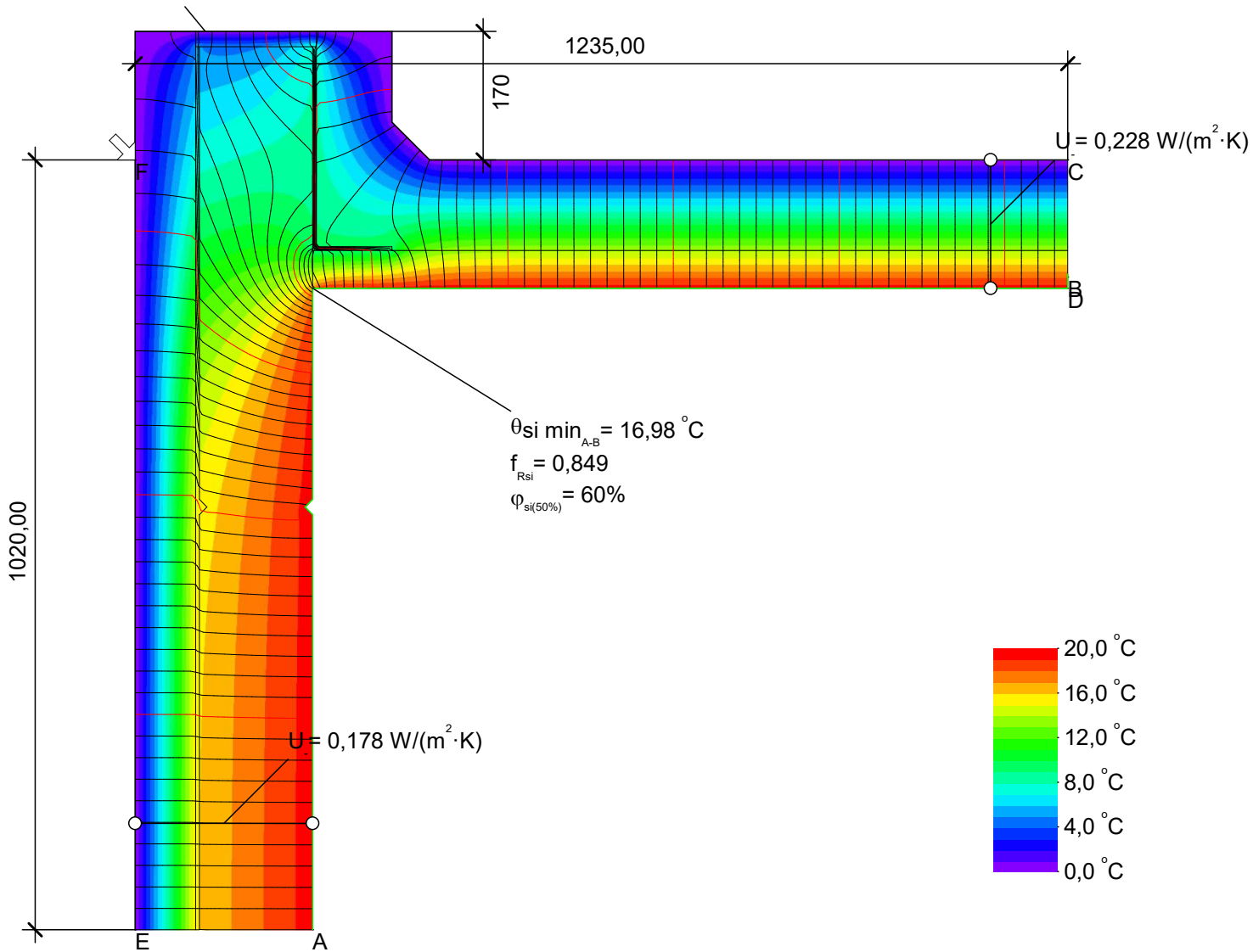
Material	λ [W/(m·K)]	ϵ
Porenbeton Rohdichte 500 kg/m3	0,150	0,900
Quadcore	0,018	0,900
Steel	50,000	
Unventilated air cavity **		
minerale wol	0,040	
rotswol	0,040	

** EN ISO 10077-2:2017, 6.4.3/anisotrop

Boundary Condition	q [W/m²]	θ [°C]	R [(m²·K)/W]	ϵ
Epsilon 0.9				0,900
Exterior, normal		0,000	0,040	
Interior, heat flux, upwards	20,000		0,100	
Interior, normal, horizontal	20,000		0,130	
Symmetry/Model section	0,000			

DT 1A.2.6

$$\Phi_{C-E} = -9,378 \text{ W/m}$$



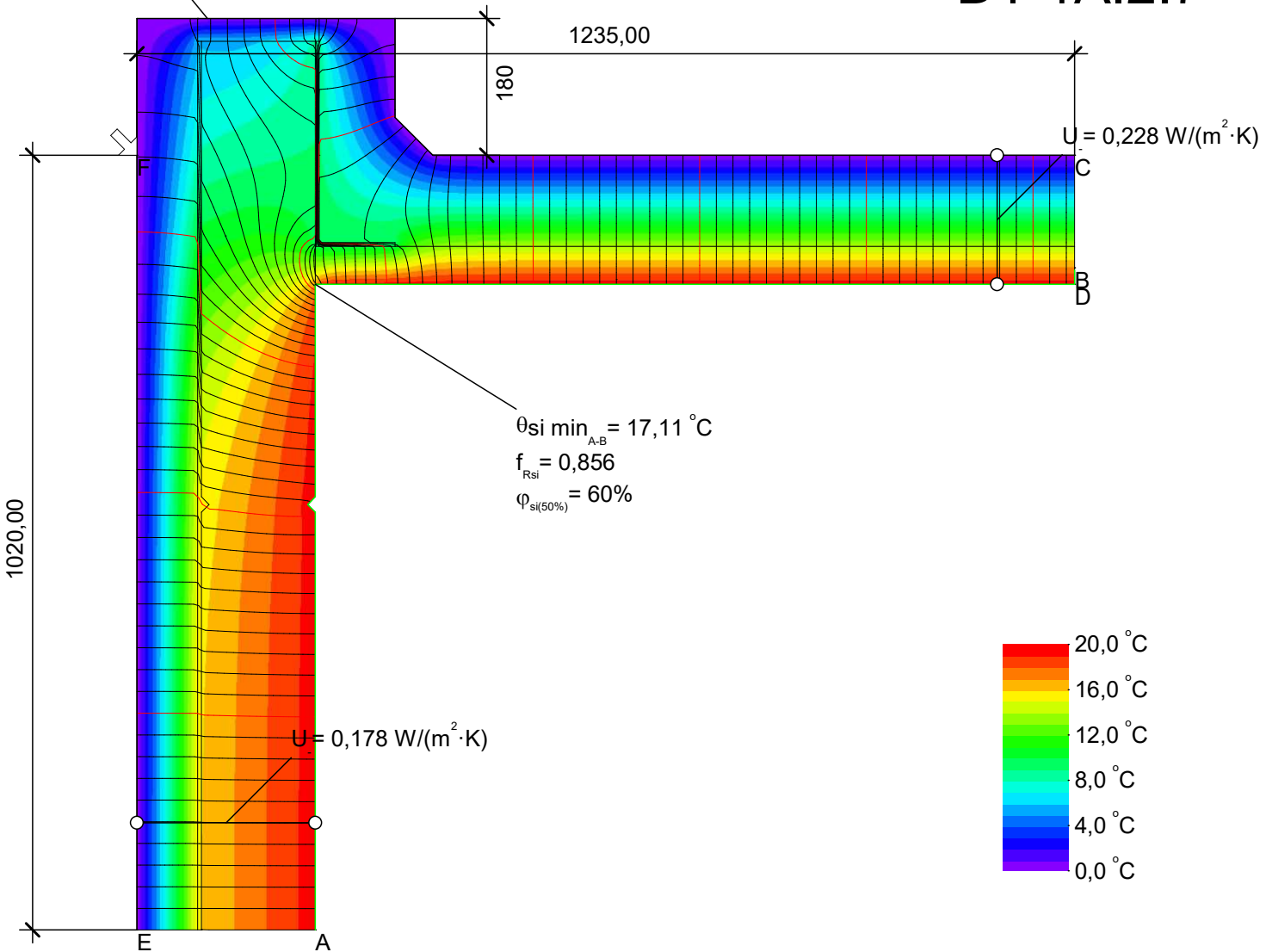
$$\psi_{C-F-E} = \frac{\Phi}{\Delta T} - U_1 \cdot b_1 - U_2 \cdot b_2 = \frac{9,378}{20,000} - 0,228 \cdot 1,235 - 0,178 \cdot 1,020 = 0,006 \text{ W/(m}\cdot\text{K)}$$

Material	λ [W/(m·K)]	ϵ
PIR	0,025	0,900
Porenbeton Rohdichte 500 kg/m3	0,150	0,900
Quadcore	0,018	0,900
Steel	50,000	
Unventilated air cavity **		
minerale wol	0,040	
rotswol	0,040	

** EN ISO 10077-2:2017, 6.4.3/anisotrop

DT 1A.2.7

$$\Phi_{C-E} = -9,249 \text{ W/m}$$



$$\Psi_{C-F-E} = \frac{\Phi}{\Delta T} - U_1 \cdot b_1 - U_2 \cdot b_2 = \frac{9,249}{20,000} - 0,228 \cdot 1,235 - 0,178 \cdot 1,020 = -0,001 \text{ W/(m} \cdot \text{K)}$$

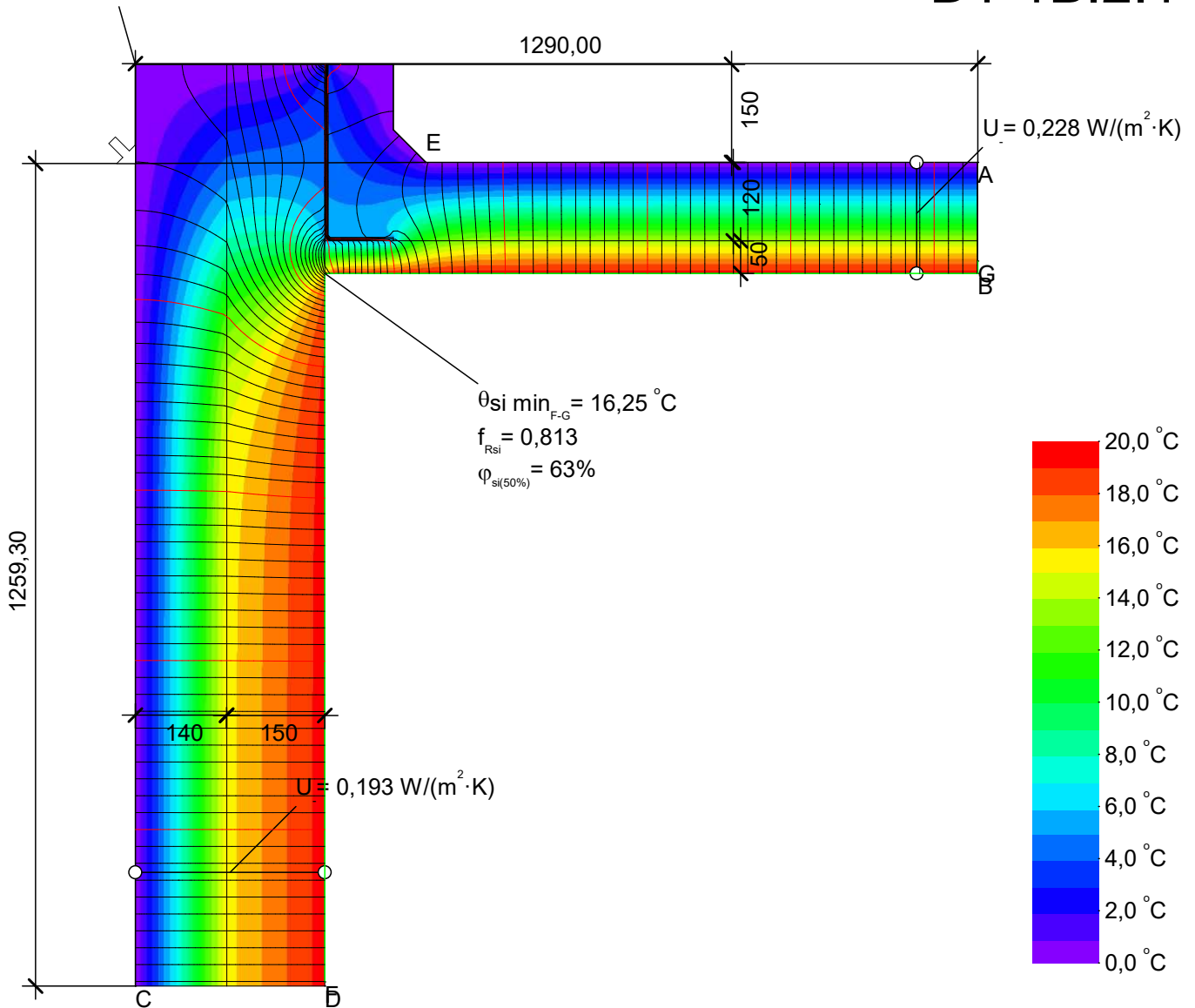
Material	λ [W/(m·K)]	ϵ
PIR	0,025	0,900
Porenbeton Rohdichte 500 kg/m3	0,150	0,900
Quadcore	0,018	0,900
Steel	50,000	
Unventilated air cavity **		
minerale wol	0,040	
rotswol	0,040	

** EN ISO 10077-2:2017, 6.4.3/anisotrop

Boundary Condition	q [W/m²]	θ [°C]	R [(m²·K)/W]	ϵ
Epsilon 0.9				0,900
Exterior, normal		0,000	0,040	
Interior, heat flux, upwards	20,000		0,100	
Interior, normal, horizontal		20,000	0,130	
Symmetry/Model section	0,000			

DT 1B.2.1

$$\Phi_{A-C} = -11,205 \text{ W/m}$$



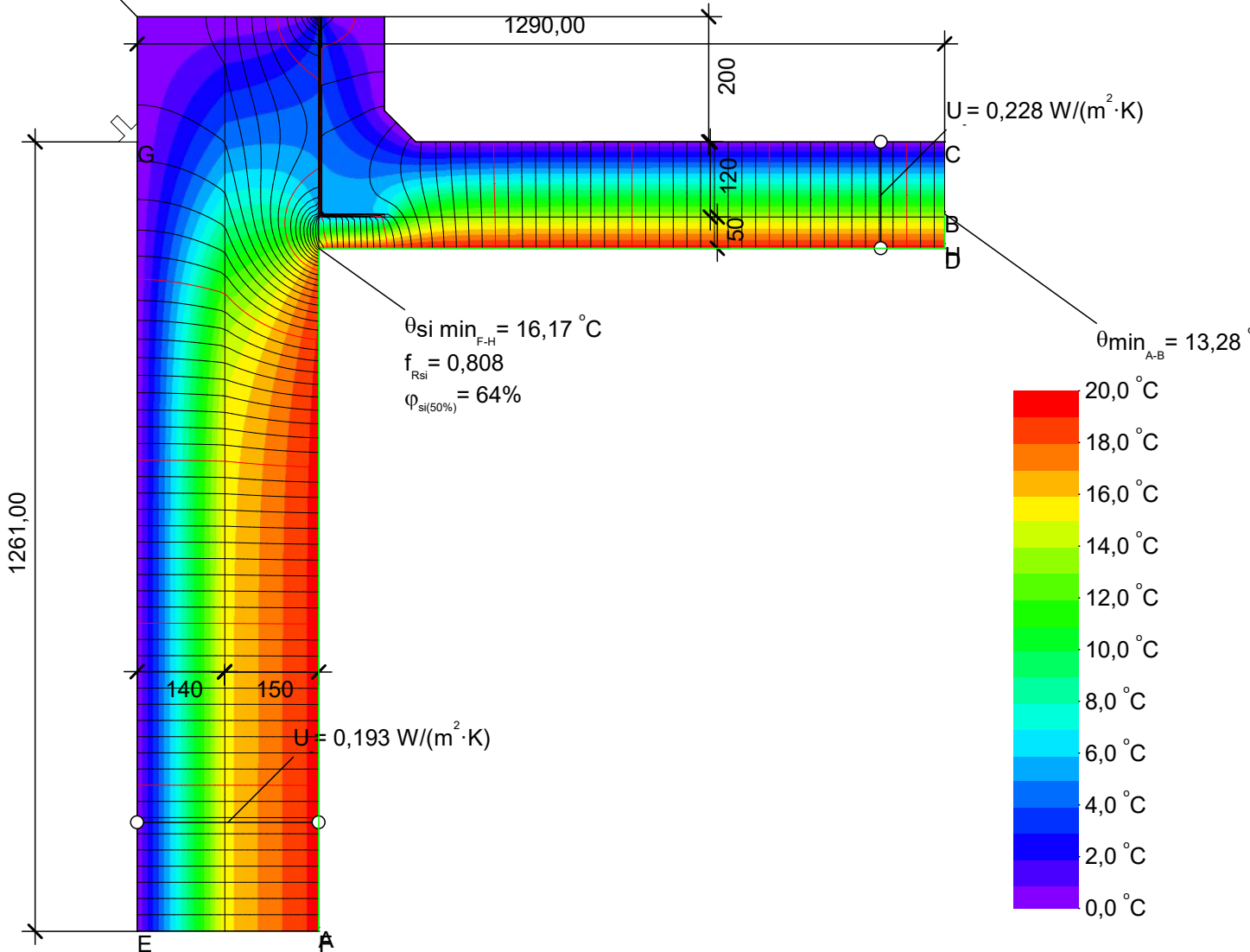
$$\psi_{A-E-C} = \frac{\Phi}{\Delta T} - U_1 \cdot b_1 - U_2 \cdot b_2 = \frac{11,205}{20,000} - 0,228 \cdot 1,290 - 0,193 \cdot 1,259 = 0,023 \text{ W/(m} \cdot \text{K)}$$

Material	λ [W/(m·K)]
Porenbeton Rohdichte 500 kg/m ³	0,150
ROCKWOOL duofit	0,035
Steel	50,000
minerale wol	0,040
rotswol	0,040

Boundary Condition	q [W/m ²]	θ [°C]	R [(m ² ·K)/W]
Exterior, normal	0,000	0,040	0,040
Interior, heat flux, upwards	20,000	0,100	0,100
Interior, normal, horizontal	20,000	0,130	0,130
Symmetry/Model section	0,000		

DT 1B.2.2

$\Phi_{C-E} = -11,154 \text{ W/m}$



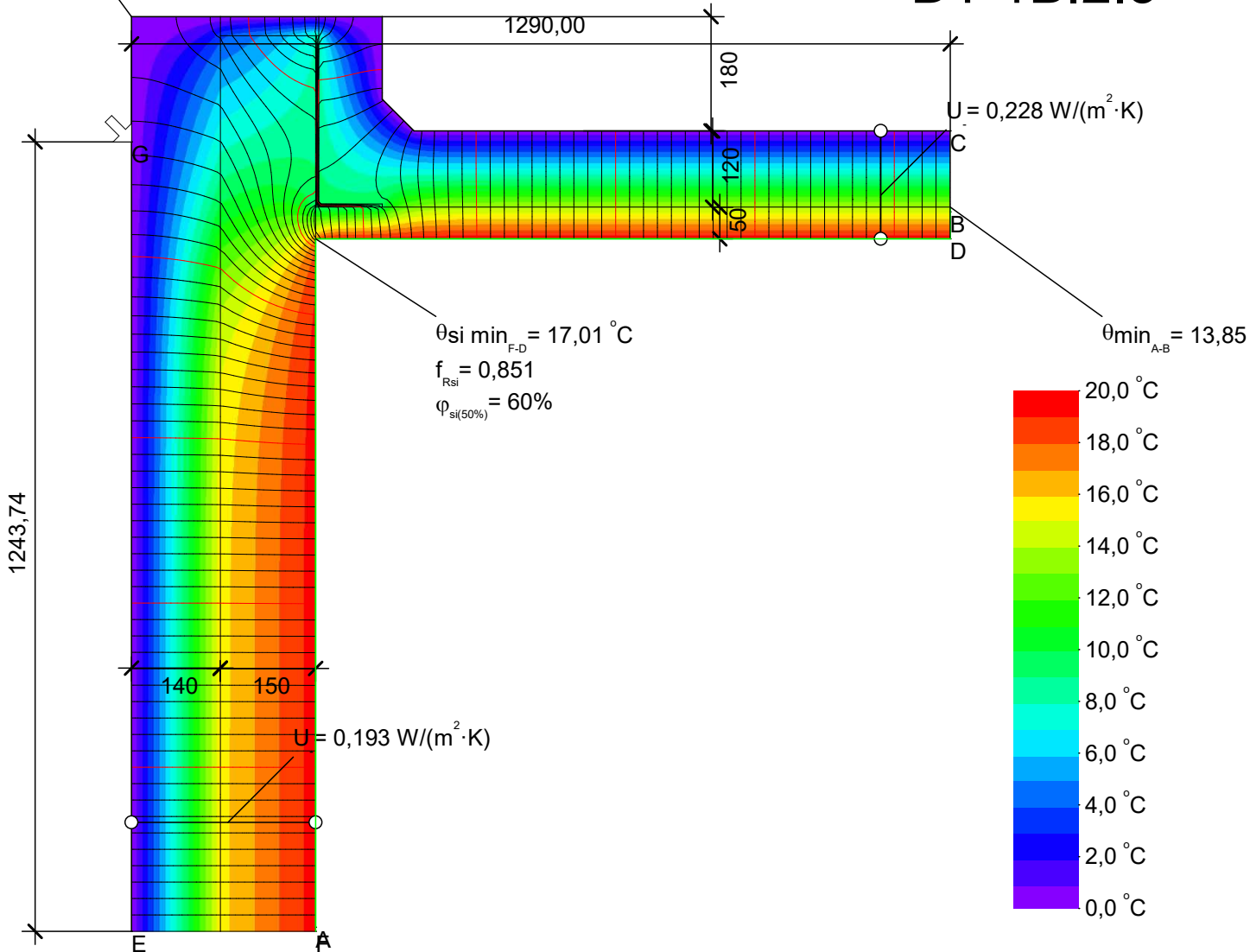
$$\psi_{C-G-E} = \frac{\Phi}{\Delta T} - U_1 \cdot b_1 - U_2 \cdot b_2 = \frac{11,154}{20,000} - 0,228 \cdot 1,290 - 0,193 \cdot 1,261 = 0,020 \text{ W}/(\text{m} \cdot \text{K})$$

Material	λ [W/(m·K)]
Porenbeton Rohdichte 500 kg/m3	0,150
ROCKWOOL duofit	0,035
Steel	50,000
minerale wol	0,040
rotswol	0,040

Boundary Condition	q [W/m²]	θ [°C]	R [(m²·K)/W]
Exterior, normal	0,000	0,040	0,100
Interior, heat flux, upwards	20,000	0,130	0,130
Interior, normal, horizontal	20,000	0,130	0,130
Symmetry/Model section	0,000		

$\Phi_{C-E} = -10,402 \text{ W/m}$

DT 1B.2.3



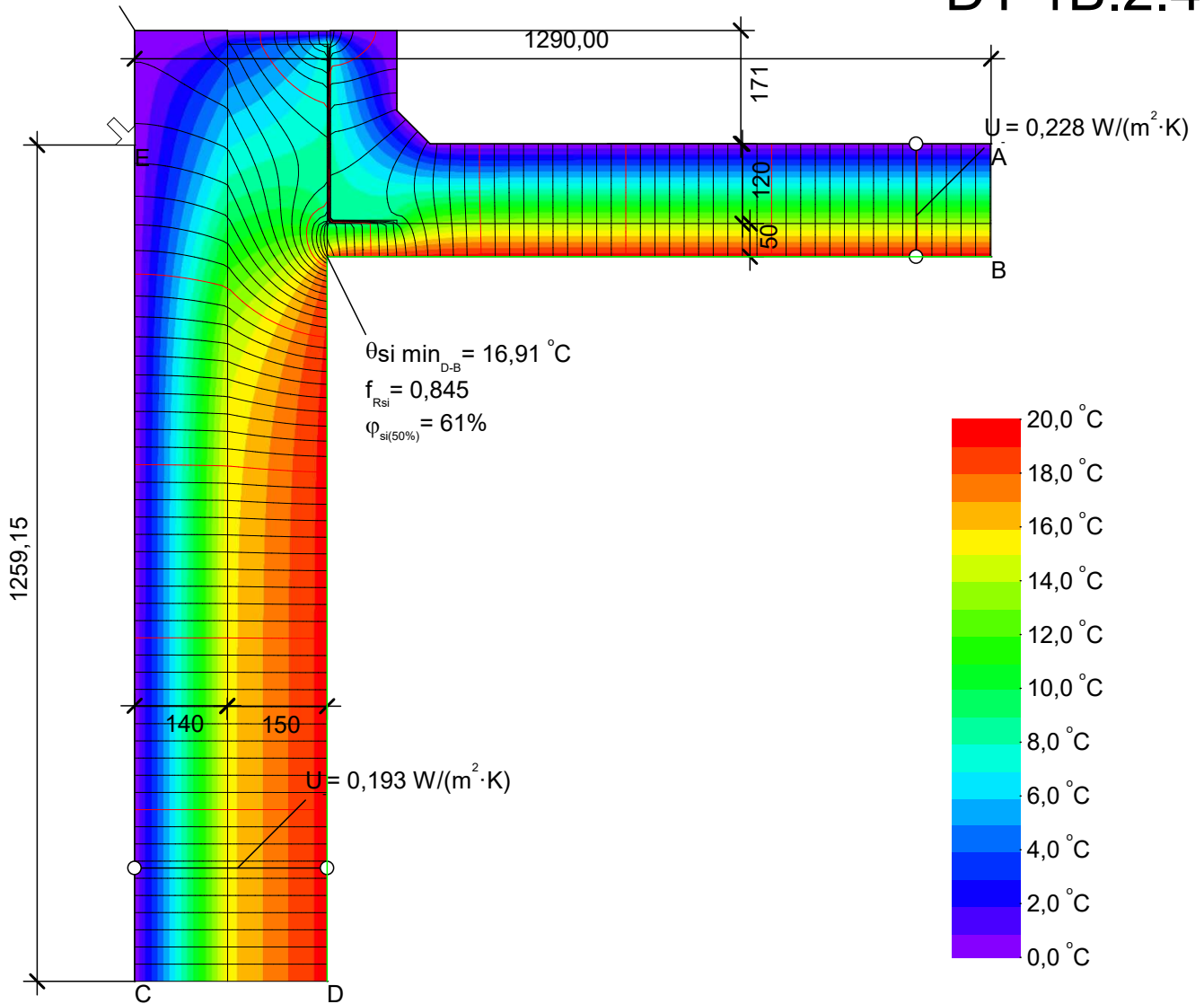
$$\Psi_{C-G-E} = \frac{\Phi}{\Delta T} - U_1 \cdot b_1 - U_2 \cdot b_2 = \frac{10,402}{20,000} - 0,228 \cdot 1,290 - 0,193 \cdot 1,244 = -0,014 \text{ W}/(\text{m} \cdot \text{K})$$

Material	λ [W/(m·K)]
PIR	0,025
Porenbeton Rohdichte 500 kg/m3	0,150
ROCKWOOL duofit	0,035
Steel	50,000
minerale wol	0,040
rotswol	0,040

Boundary Condition	q [W/m ²]	θ [°C]	R [(m ² ·K)/W]
Exterior, normal	0,000	0,040	
Interior, heat flux, upwards	20,000	0,100	
Interior, normal, horizontal	20,000	0,130	
Symmetry/Model section	0,000		

$\Phi_{A-C} = -10,506 \text{ W/m}$

DT 1B.2.4



$$\Psi_{A-E-C} = \frac{\Phi}{\Delta T} - U_1 \cdot b_1 - U_2 \cdot b_2 = \frac{10,506}{20,000} - 0,228 \cdot 1,290 - 0,193 \cdot 1,259 = -0,012 \text{ W}/(\text{m} \cdot \text{K})$$

Material	λ [W/(m·K)]
PIR	0,025
Porenbeton Rohdichte 500 kg/m ³	0,150
ROCKWOOL duofit	0,035
Steel	50,000
minerale wol	0,040
rotswol	0,040

Boundary Condition	q [W/m ²]	θ [°C]	R [(m ² ·K)/W]
Exterior, normal	0,000	0,040	
Interior, heat flux, upwards	20,000	0,100	
Interior, normal, horizontal	20,000	0,130	
Symmetry/Model section	0,000		